

DRY-FAST • MONITOR CONTROL • DOCUMENT

With E-TES SD Low-Profile



LOW-PROFILE



EASY TO
CARRY



STACKABLE

e-tes™ SD
electric thermal energy system

Learn more at
www.tesdryingsystem.com or call 800-948-1754



DRY-FAST • MONITOR • CONTROL • DOCUMENT



120 volt shown, also available in a 240 volt version

E-TES SD Low-Profile 120V #MB120LP \$2,395

E-TES SD Low-Profile 240V #MB240LP \$2,495

Standard Features

All of these features come standard on the E-TES SD Low-Profile:

- Smaller profile allows the E-TES to fit into tight areas, such as crawl spaces
- Lighter weight, only 30 lbs
- Built-in ergonomic handles make it easier to carry multiple E-TES'
- Straight through air flow, more air flow and less internal turbulence
- Micro-processor
- LCD display
- Built-in hour meter
- Real time clock
- Humidity and temperature sensor
- NEC® compliant
- Dual circuit indicator (120 volt)
- GFCI protection
- Airflow and triple heat safety shut off
- 50' GFCI cord
- (1) 4-prong dryer adapters included with the 240 volt
- Range adapters available

| | E-TES SD Low-Profile |
|-----------------------|----------------------|
| Low-Profile | ✓ |
| Light Weight | ✓ |
| Easy View Front Panel | ✓ |
| Increase Air Flow | ✓ |
| Easily Stackable | ✓ |



only 26" tall with an air mover installed

Smart-Dry Package (optional)

The E-TES Smart Dry (SD) Package is where you will make your money. Being able to dry fast is one thing. Providing documentation to the insurance adjuster of what you have done and how quickly you were able to dry the structure is what will make you stand out from the crowd. E-TES SD has multiple sensors to control heat output and environments.



Moisture Content Sensor: Penetrating probes that measures WME (Wood Moisture Equivalent) Percent

PGE5060 \$54.91



Air Temperature Sensor: Control ambient air temperature to prevent over heating and wasted energy

AT202 \$49.90



Surface Temperature Sensor: Turns heat on and off to maintain optimal drying temperature

AT200 \$47.79

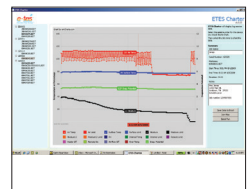


Remote Exhaust Fan Control: Radio Frequency (RF) signal to control exhaust fan

AT206 \$198.00



Data Logger: Records and stores data continuously (up to 4,000 hours), battery back-up, USB/flash drive downloadable.



E-TES Charting Software: Graphs data to Excel spreadsheets for reporting and documentation (download free at tesdryingsystem.com)

E-TES SD SMART PACKAGE

E-TES SD Smart Package has multiple sensors to control heat output and environments. The Smart Package includes: Moisture Content Sensor, Air Temperature Sensor, Surface Temperature Sensor, Remote Exhaust Fan Control, two sensor extension cords and carrying bag.



AT210 \$387.47



Sensor Extension Cord
AT204 \$15.90



Smart Package Travel Bag
AT208 \$5.95

E-TES SD rents for \$280 per day in Xactimate, code **WTR HTAM**. Now you can add monitoring fees. Also add **WTR DRY** for the air mover at a rate of \$205 a day.