



# Take Control of Your Job Site with the Remote Field Commander

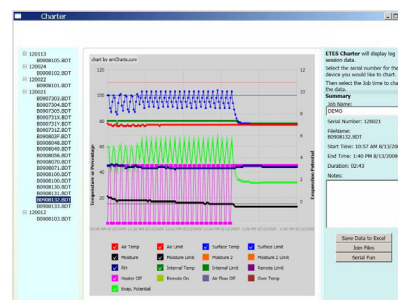
*Program*  
*Monitor*  
*Control*  
*Data Log*  
*Chart*



In a coffee shop, with a customer, or spending time with your family. With the Remote Field Commander Package you can monitor and control your restoration jobs remotely and spend time being more productive and doing the things you want. Measure air and surface temperatures, relative humidity, moisture and more all from wherever you are.

# Programmed to...

- Turn air mover on/off based on humidity/GPP
- Turn dehumidifier on/off based on humidity/GPP
- Turn off Injectidry or E-TES when wood floors reach dry standard
- Turn equipment off or exhaust fan on at high air temperature
- Send alarms when dry conditions are met (complete), power outage, or equipment unplugged/turned off
- Turn equipment on/off based on clock, e.g., off at 11 p.m., on at 8 a.m.
- Force on/off
- Validates jobs with charting software



## BASE STATION

- Communicates by radio frequency
- Up to 14 sensors and 14 power controllers



## REMOTE POWER CONTROLLER

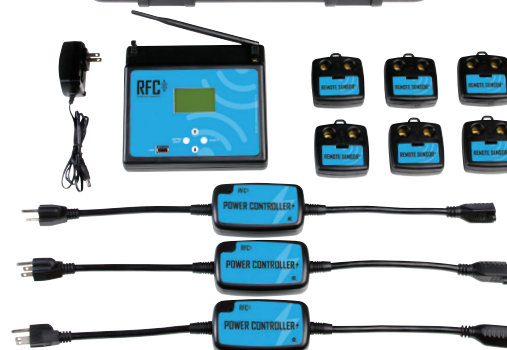
- Wireless switch turns equipment on/off
- Measures current draw (amperage)



## REMOTE SENSOR

Measures:

- Air temperature
- Surface temperature
- Relative humidity
- Moisture content
- GPP



## RFC PACKAGE

The RFC Package includes:

- 1 Remote Field Commander Base Station
- 3 Remote Power Controllers
- 6 Remote Sensors
- 1 Power Cord
- 1 USB Cable
- 8 Batteries
- 16 Stainless Steel Screws
- 1 Hard Carrying Case