

The

ELIMINATOR

WATERLESS, LOW PRESSURE, LOW VOLUME,
RADIO REMOTE CONTROL, SOFT WASH,
SURFACE CLEANING AND BRIGHTENING SYSTEM

ATTRIBUTES:

**CONTROLS AN UNCONTROLLABLE
CHEMICAL REACTION TO GREATLY
ENHANCE CLEANING RESULTS
WITHOUT WASTING PRODUCT**

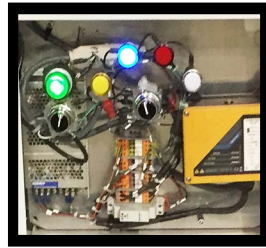
- WATERLESS OPERATION
- LOW PRESSURE (120 psi)
- LOW VOLUME (1/2 gpm)
- RADIO REMOTE CONTROL
- RADIO RANGE 900 FEET
- TRANSMITTER ON WAND
- MODIFIES STATIC CHARGE OF SURFACES
- BRIGHTENS SURFACES
- SAFE ON ALL SURFACES
- ENVIRONMENTALLY FRIENDLY
- NO CHEMICAL WASTE
- WETTED METAL: STAINLESS STEEL
- VITON SEALS & "O" RINGS
- INSIDE TUBING: 1/4" ID POLYPROPYLENE
- SPRAY HOSE: 1/4" ID POLYPROPYLENE
- HOSE 1-50': 1/4" SS QUICK DISCONNECTS
- CAN USE UP TO 200 FEET HOSE
- BUILT IN HOSE HOLDER
- STAINLESS STEEL WAND
- WAND EXTENSIONS HOLDER
- STAIR CLIMBER BARS INCLUDED
- FAN COOLED
- POWER CORD HOLDER
- CABINET WATER RESISTANT/UL
- ALL TOOLS ON BOARD
- CAN SPRAY ALL SERUM SOLUTIONS
- FIXED MIXING RATIO (1:18)
- HIGHLY PORTABLE
- EASY TO HANDLE
- TWO WHEEL ALUMINUM CART
- CART: BAKED POWDER COAT
- CART WEIGHT: LOADED 180 LBS., EMPTY 55 LBS.



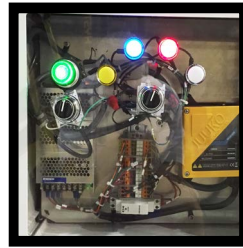
PATENT PENDING

SERUM PRODUCTS, LLC, 1355 West Oak Commons Lane, Suite B, Marietta, Ga. 30062
Local (678) 290-1880 • Fax (678) 290-1769 • (866) 477-6078

THE ELIMINATOR



GREEN Light: Power On
YELLOW Light: Motor Off
BLUE light: Serum 1000 Only



BLUE & RED light: Serum 1000 & Accelerator



WHITE light: Utility Inlet: For All Other Serum Solutions



Radio Remote Control

THE REACTION:

The Eliminator is designed to allow a normally uncontrollable chemical reaction to be controlled and used to clean and brighten surfaces without waste. In years past, many companies have offered accelerator components to be added to Hydrogen Peroxide to increase its performance. The accelerator always had to be added by a person to the volume of hydrogen Peroxide solution in order to accomplish the enhancement. Once the accelerator is added to the Hydrogen Peroxide, it starts a chemical reaction that can not be stopped and the reaction continues for several hours until the total solution is rendered ineffective and has to be discarded. If not used, its discarded as expensive waste.

The Eliminator changes all that. The Eliminator automatically mixes the Hydrogen Peroxide solution, Serum 1000, at a fixed ratio of 18:1 with our Serum Accelerator. Because it mixes at the beginning of the application hose, there is no waste other than what is in the 1/4" ID application hose.

RADIO REMOTE CONTROL

Normally on this type equipment, the application hose would have a trigger controlled valve to stop the liquid flow out of the wand. In the Eliminator system we use a radio remote system to turn the pump motor on and off. The reason: because we are controlling an uncontrollable reaction, the liquid in between the pump and wand nozzle can not be contained because of oxygen gas off in that space. We install a check valve, with a 2 lb. crack pressure, just behind the spray nozzle to prevent liquid from continuing to run out of the hose and wand while the pump is turned off. As gas pressure builds in the hose and wand and reaches slightly over 2 lbs., it opens momentarily to discharge the small amount of pressure that has built in the hose and wand. It opens only momentarily to relieve pressure and re-closes to stop the liquid run out of the hose and wand. The radio remote system allows the operator to enjoy the convenience of a trigger controlled operation without the trigger controlled valve.

OPERATION PARAMETERS

The Eliminator operates at a pressure of 120 psi and pumps at the rate of 0.5 gpm. All wetted metal parts are 316 Stainless Steel. All wetted plastic is polypropylene. All O rings and seals are either Viton or Teflon. The system is designed to withstand the rigors of the chemistry its pumping and extends the life expectancy of our equipment.

MIXING CONTROL

The Eliminator combines the two chemistries at a fixed rate of up to 18 parts Serum 1000 to 1 part Accelerator (1:18). The mix rate is controlled by a fixed orifice inside the machine cabinet and can't be changed by the user. With this system the only waste is in the hose and with only a 1/4" ID hose, there is very little waste.

SERUM PRODUCTS, LLC, 1355 West Oak Commons Lane, Suite B, Marietta, Ga. 30062
Local (678) 290-1880 • Fax (678) 290-1769 • (866) 477-6078

THE ELIMINATOR

POWER CONSUMPTION

The pump is a dual apposed piston, positive displacement pump driven by a 120 VDC motor that consumes only 0.3 amps of power. The three 24 VDC solenoid valves consume less than 0.8 amps each of 24 volt power produced by a 24 VDC power supply that draws less than 0.5 amps of 120 VAC power. The entire system draws less than 4 amps at 120 VAC. This will allow the system to be powered by any normal circuit in most houses and buildings without fear of overloading circuits. It also can be operated via an inverter plugged into a cigarette lighter socket in a vehicle or a engine operated portable power supply without fear of overloading the power source.

CLOSED LOOP SYSTEM

The Eliminator is outfitted with a tray between the wheels of the dolly to hold two five gallon pails, one of Serum 1000 and one of Serum Accelerator. The pail of Accelerator is connected to the pump via a closed loop chemical draw system. The Accelerator pail is fitted with an insert in the 2" opening to prevent spillage and provide a check valve inside a male connection to prevent leakage. The mating cap has a female check valve fitting that marries to the male connection in the insert. All the Accelerator liquid is contained within the closed loop system when installing or removing the cap or when in use. With a closed loop system, there is no liquid to be exposed to skin. This will protect un-gloved hands and fingers from the chemicals during exchanging empty containers for full containers.

WETTED PARTS

All wetted metal parts are 316 stainless steel. All wetted plastic parts are polypropylene. All parts were selected to withstand the rigors of the chemistry to which exposed.

CABINET

The cabinet is UL approved and is water resistant. The cabinet material is polypropylene and holds all the electrical and mechanical components on two removable metal plates. In the unlikely event of a mechanical failure, the cabinet is designed to be removed and replaced with a new or re-manufactured one. There are four bolts holding the cabinet to the dolly and can be easily and quickly removed. The cabinet is fitted with a tamper evident seal to protect the warranty. All repairs are to be done by Serum Products at our facility. No field repairs are allowed by users or distributors. Our distributors will have a replacement cabinet in the unlikely event of a failure.

SELECTOR SWITCHES

There are two selector switches on the front panel.

The left switch is the power switch and when the switch is actuated the green power light comes on.

The right switch has four positions.

Position 1: initiates a **YELLOW** light that indicates the pump motor is NOT operating and no chemicals are selected.

Position 2: initiates a **BLUE** light and energizes solenoid valve one that allows Serum 1000 to be pumped to the wand for application.

Position 3: initiates the **RED & BLUE** lights and energizes solenoid valves one and two that allows Serum 1000 (valve one) and Serum Accelerator (valve two) to be mixed at a 1:18 fixed ratio for application through the wand.

Position 4: initiates the **WHITE** light to energize solenoid valve three that allows any one of our other products to be pumped and applied.

SERUM PRODUCTS, LLC, 1355 West Oak Commons Lane, Suite B, Marietta, Ga. 30062
Local (678) 290-1880 • Fax (678) 290-1769 • (866) 477-6078

THE ELIMINATOR

CHECK VALVES

The chemical pickup and delivery tubes inside the cabinet all have check valves to prevent back flow and keep all tubes full of liquid to prevent air lock in the pump. The check valves allow the pump to recover quickly after periods in the off position. The chemical pick up tubes have check valves at the end of the pick up tubes inside the pails. This keeps the liquid in the pick up tubes to remain full and prevents the liquid from draining back into the pail.

HOSE

The delivery hose is 1/4" ID x 3/8" OD x 50' polypropylene inner tube protected by an outer tough polymer coating material. The hose and its connectors are designed to survive our chemistry. The unit comes standard with one 50' length of application hose with stainless steel quick disconnects. 50' sections complete with stainless steel quick disconnects are available for an additional charge.

DOLLY

The welded, all aluminum, two wheel equipment dolly has two 10" solid rubber rimmed wheels allowing the unit to ride very softly even over ruff terrain. The dolly has stair climber bars protecting the wheels to allow the unit to be taken in and out of trucks and up and down stairs without hanging up on bumpers or the edges of steps. The aluminum dolly is painted via a powder coating process that is baked on and offers extremely good corrosion resistance. The dolly carries two five gallon pails that together when full, weigh 115 lbs. The installed cabinet weighs 25 lbs. When the dolly is rocked back for movement, the 25 lb. cabinet which now passes the center of gravity to shift the weight to your hands, is counter balance by the 108 lbs. on the other side of the center of gravity allowing the dolly to feel very light and is easily moved about.

ALL TOOLS ON BOARD TO ACCOMPLISH ANY TYPE AND SIZE JOB

All the tools you would need to accomplish the spraying job is on board the dolly. It has hose cleats on the back side of the dolly to hold up to 200 feet of hose. All hose sections come standard with stainless steel quick couplings. It has an aluminum 2" tube on the upright for holding wand extensions. It has two cleats on the opposite side upright to wind up the power cord. It carries two full five gallon pails, Serum 1000 and Accelerator, on board, connected and ready to spray. You only have to bring spares if needed. Its always ready to spray!!! This allows you to use the system on small and large jobs. No job too small or too large for the Eliminator. Its there for you to use on any remediation job...mold clean up, water loss clean up, crime & trauma scene clean up, meth house clean up, smoke odor, soot and smoke caused by fire and any job requiring clean up of organic contamination.

WARRANTY

The Eliminator offers a one year warranty on parts, labor and workmanship. In the unlikely event of a malfunction, we will provide at no charge and at our discretion, a new or refurbished unit, from Serum's facility or one of our stocking distributors. This warranty applies to normal use and wear only and excludes damage due to misuse, negligence and acts of nature. For a copy of the complete warranty, contact Serum Products or one of our authorized stocking distributors.

The "Eliminator" is to the Remediation Industry what Truck Mounts are to the Carpet Cleaning Industry. The "Eliminator" confirms and enables the Serum System.

ORDER TODAY: See our web site for an authorized distributor near you.

PART NUMBER: 6-05120

MODEL NUMBER: RM05120

SERUM PRODUCTS, LLC, 1355 West Oak Commons Lane, Suite B, Marietta, Ga. 30062

Local (678) 290-1880 • Fax (678) 290-1769 • (866) 477-6078