

# PROTECTIVE FOOTWEAR

**NORTH**<sup>®</sup>

**SERVUS**<sup>®</sup>



**RANGER**<sup>™</sup>

**CHEMICAL PROTECTION**

**ANSI SPECIFIED PROTECTION**

**DIELECTRIC PROTECTION**

**INSULATED PROTECTION**

**SLIP PROTECTION**

**WEATHER PROTECTION**

**SPECIAL OPERATIONS**

## NSP Job-Specific Protective Footwear

Effective July 5, 1994, the Occupational Safety and Health Administration (OSHA) revised portions of the general industry safety standards regarding Personal Protective Equipment (PPE).

Paragraph [d]: Selection.

Employers are required to use their awareness of workplace hazards to enable them to select the appropriate PPE for the work being performed.

NSP makes protective footwear that is designed and tested to meet specific section requirements of the **American National Standards Institute (ANSI) Z41 PT 99, "American National Standard for Personal Protection – Protective Footwear."**

**Also meets CAN/CSA Z195-02 for Canada.**

These standards establish guidelines for the protection of the toe and upper foot from impact and compression, for the protection of the underfoot from puncture, and for electrical hazard protection. As this catalog demonstrates, NSP footwear also provides additional benefits in fit, support, cushioning, insulation, waterproofness, and chemical resistance that can benefit workers by reducing dampness, contamination, fatigue, stress, and general discomfort.

*Employers, in conjunction with NSP representatives, can identify job-specific PPE footwear and establish guidelines for proper use and care to maintain important PPE protection and employee satisfaction.*

**Contact 800-777-9021 for the name of your NSP Sales Representative who can help you with any PPE inquiries you may have.**



### STEEL-TOE protection

SAFE-TOE steel toe construction provides roomy comfort and protection. Meets ANSI Safety Specifications: Z41 PT 99 Section 1 for Impact/75 and Compression/75 toe safety. Meets Canadian standard CAN/CSA Z195-02.



### METATARSAL GUARD protection

NSP anchored and floating metatarsal guards are built-in for extended protection. Meets ANSI Safety Specification: Z41 PT 99 Section 2 for Metatarsal foot protection.



### STEEL MIDSOLE protection

Built-in SAFE-STEP flexible stainless steel midsoles provide extra protection underfoot. Meets ANSI Safety Specification: Z41 PT 99 Section 5 for Puncture Resistant protection.

## CONTENTS

### CHEMICAL PROTECTION Page 3

**Meat & food processing; chemicals**

SERVUS NEOPRENE III FOOTWEAR  
XTRATUF INSULATED NEOPRENE PACS  
SERVUS TDT / SUPREME FOOTWEAR

### ANSI Z41 SPECIFIED PROTECTION Page 11

**Meeting ANSI Z41 PT 91 Safety Standards**

RANGER METATARSAL GUARD RUBBER FOOTWEAR  
RANGER STEEL MIDSOLE RUBBER FOOTWEAR  
RANGER STEEL TOE RUBBER FOOTWEAR

### DIELECTRIC PROTECTION Page 17

**First choice for electrical hazard work**

RANGER OVER-THE-FOOT DIELECTRIC PACS

### INSULATED PROTECTION Page 18

**With "Comfort Zone" guidelines**

INSULATED PACS & OVERSHOES

### SLIP PROTECTION Page 22

**Light, convenient slip-resistant line-up**

SERVUS LITE 'N GRIT OVERSHOES  
SERVUS STUDS SECOND SOLES

### WEATHER PROTECTION Page 24

**For dry feet in a variety of conditions**

SERVUS OVER-THE-FOOT RUBBER FOOTWEAR  
SERVUS CHESTWADERS & HIP BOOTS  
SERVUS RUBBER OVERSHOES  
SERVUS SF SUPER-FIT INJECTION-MOLDED OVERSHOES  
SERVUS & NORTHERNER INJECTION MOLDED FOOTWEAR

### SPECIAL OPERATIONS Page 32

### ACCESSORIES Page 33

### CHEMICAL RESISTANCE COMPARISONS Page 34

### INDEX & PACKING INFORMATION Page 35

**NOTE: Median boot heights and weights are provided as a guide. All proportioned heights and weights will necessarily vary by size.**



### DIELECTRIC protection

Special construction and testing provide specified boots for jobs with electrical hazards. Meets ANSI Safety Specification: Z41 PT 99 Section 4 for Electrical Hazard protection.



### Removable CUSHION INSOLE protection

Proper cushioning and arch support not only provide all-day comfort, but also help fight foot and leg fatigue – protecting against unnecessary stress and muscle pain.



### INSULATED protection

A variety of insulating materials and constructions are used to keep feet closer to body temperature in extremes of heat and cold. Each suggested COMFORT ZONE offers a range of temperatures at which feet will remain comfortable with normal activity.



# Seamless Neoprene III footwear... tops for comfort, durability, protection.

**Neoprene rubber offers the best resistance to fuels, animal blood and fats, and chemical contamination and deterioration.**

SERVUS Neoprene III footwear is triple-dipped for high resistance to many deteriorating elements. Neoprene footwear will be lighter in weight than ordinary rubber boots, but extremely durable and pliable. This combination makes neoprene footwear unmatched for comfort and protection.



- **SLAUGHTERHOUSES**
- **SPECIALTY MEAT PROCESSING**
- **POULTRY PROCESSING**
- **PETROCHEMICAL PLANTS**
- **AGRI-CHEMICAL INDUSTRIES**
- **OIL DRILLING AND REFINING**
- **DAIRY AND FOOD PROCESSING**
- **FISHING INDUSTRIES**
- **BREWERIES AND BOTTLING**
- **FARMING**
- **WASTE DISPOSAL**

**A** SERVUS neoprene footwear is triple-dipped to create a seamless coating of rubber that is highly resistant to many organic and inorganic chemicals. Vulcanizing further seals and strengthens this superior watertight material.



**DURAGUARD** metatarsal guards on SERVUS 22206 meet ANSI Safety Specifications: Z41 PT 99 Section 2 upper foot Impact and Compression protection. Built-in "floating" protection does not hinder comfort or mobility.

**B** Neoprene rubber is softer, lighter and far more pliable than ordinary rubber making neoprene boots more comfortable and flexible.

**G**

Built-in cushion insoles with arch support help fight fatigue and stress of tired legs and back.

**C** Hand-layered construction allows flex and strength at critical stress points.

**H**

SERVUS neoprenes offer a choice of outsole tread patterns. Both work well to provide a superior grip on smooth, wet floors for better traction and stability.

**D** SERVUS fabric linings are soft and durable. Feet slide easily in and out. Moisture and condensation are wicked away.



SERVUS steel toe footwear is classified by **Underwriter's Laboratories Inc.®** in accordance with ANSI Z41 PT 99 American National Standard for Personal Protection – Protective Footwear

**E** Extra-thick bumpers for toe and heel help protect against knocks and wear.

**F** Heel counters reduce heel slippage and provide form-fitting comfort.



Made in the U.S.A.



**SAFE-TOE** steel toe construction meets ANSI Z41 PT 99 Section 1 Impact/75 and Compression/75 toe protection. Meets Canadian Standard CSA Z195-02 Grade 1.



**SERVUS DURAGUARD Metatarsal Shield** provides the extra measure of upper foot protection that can prevent unnecessary pain and lost work hours.

**22206 NEOPRENE DURAGUARD**  
**15" Copper Tan Neoprene Safety Pac**



**SAFE-TOE** steel toe construction. **DURAGUARD** floating metatarsal guard. Chevron sole and heel. Made in U.S.A.  
**Whole sizes 5-15**



## NEOPRENE III with Neo-Grip Outsoles

Our chemists have formulated a Neoprene latex that resists the broadest variety of animal and vegetable fats and fluids, as well as the harshest of petro and agri-chemical substances. Despite its lightweight, our SERVUS Neoprene III footwear is extremely durable, and remains the most comfortably supple boots made.

- **Safety styles meet ANSI Z41 PT 99 Section 1 for Impact/75 and Compression/75 toe protection.**
- **Premium neoprene latex is very resistant to both organic and inorganic chemicals, fats, and fluids.**
- **Seamless, dipped construction creates a soft, comfortable boot that remains waterproof and pliable in harshest environments.**
- **Suction-gripping neoprene tread patterns lock on to slick floors.**
- **Tough, comfortable fabric linings for easy on and off.**
- **Cushion insoles reduce fatigue for all-day comfort.**
- **Made in U.S.A. — 100% waterproof.**



### Neo-Grip Slip-Resistant Sole & Heel

Extra-flexible, pattern grips wet surfaces for better traction.



22103



22148



**22103**

**6" Copper Tan  
Neoprene Safety Pac**



SAFE-TOE steel toe construction.  
NEO-GRIP sole and heel.  
Made in U.S.A.

**Whole sizes 6-13**



**22148**

**12" Copper Tan  
Neoprene Safety Pac**



SAFE-TOE steel toe construction.  
NEO-GRIP sole and heel.  
Made in U.S.A.

**Whole sizes 6-13**



**22248 (not shown)**

**16" Copper Tan  
Neoprene Safety Pac**



SAFE-TOE steel toe construction.  
NEO-GRIP sole and heel.  
Made in U.S.A.

**Whole sizes 6-13**



## NEOPRENE III with Chevron Outsoles

### Chevron Self-Cleaning Sole & Heel

Flat, surface-to-surface tread pattern for extra slip-resistance on slick surfaces.



**22114**  
**12" Copper Tan**  
**Neoprene Safety Pac**



SAFE-TOE steel toe construction.  
Chevron sole and heel.  
Made in U.S.A.

**Whole sizes 3-15**

**22115** (not shown)  
(As 22114 without a steel toe.)  
**Whole sizes 3-15**



**22214**  
**16" Copper Tan**  
**Neoprene Safety Pac**



SAFE-TOE steel toe construction.  
Chevron sole and heel.  
Made in U.S.A.

**Whole sizes 3-15**

**22215** (not shown)  
(As 22214 without a steel toe.)  
**Whole sizes 3-15**

## XTRATUF® INSULATED Neoprene Pacs

These XTRATUF neoprene pacs have built-in foam insulation to keep feet warm and dry in low temperatures.

Now you can have all the advantages of neoprene protection in cold weather or refrigerated work environments.



**22274G XTRATUF**  
**INSULATED**  
**15" Copper Tan**  
**Neoprene Pac**



Built-in foam insulation.  
Chevron sole and heel.  
Made in U.S.A.  
**Men's whole sizes 5-14**



**22273G XTRATUF**  
**INSULATED**  
**15" Copper Tan**  
**Neoprene Safety Pac**



SAFE-TOE steel toe construction.  
Built-in foam insulation.  
Chevron sole and heel.  
Made in U.S.A.  
**Men's whole sizes 3-15**





## Triple Density Technology®

**Now injection-molded footwear can be specially compounded to meet the chemical resistance needs of specific jobs.**



SERVUS TDT (Triple Density Technology) allows injection-molded footwear to have three distinct compounds merged in each boot. Now compounds for wear and traction can be balanced with compounds for specific chemical resistance to create boots that are tougher, safer, and more reliable in harsh environments.

**A**

TDT compounding formulas provide resistance to a variety of chemicals.



Contour Cushion Insoles are lightweight insoles — contour-formed to the foot — with lift at the arch and support at the heel. Removable, washable, and replaceable.

**B**

Leather-grained molded uppers offer seamless, waterproof protection.

**K****L**

TDT compounding allows the outsoles to have two formulas: a tough, abrasion-resistant compound for the outsole perimeter, and a softer, slip-resistant formula for the centersole treads.

**C**

Contour molding fits comfortably without heel slippage.

**D**

Specific lasting and sizing for both men and women.

**K**

Slip-resistant centersole treads are grooved and angled for maximum traction. The SERVUS PRO™ compound is rated Class 5 (best rating) using the ASTM F-489 test method.

**E**

Boot heights are proportioned to boot size.

**L**

The perimeter outsoles are a high molecular weight compound created for abrasion resistance as well as oil, chemical, and blood and fats deterioration resistance. Self-cleaning triangular outsole cleats.

**F**

Extra-thick toe and heel guards protect against knocks and wear.

**G**

Color coded midsole stripes: Yellow for safety toe styles and red for plain toe styles.

Made in the U.S.A.

**H**

Higher, wider kick-off lugs.

**I**

Grooved angled heel stop grips floor when pushing off at heel.

**J**

Extended steel shanks bridge the instep and are arched and ribbed for strength and support. They provide more comfort and safety on ladder rungs.



SAFE-TOE steel toe construction in yellow trim styles meet ANSI Z41 PT 99 Section 1 Impact/75 and Compression/75 toe protection. Meets Canadian Standard CSA Z195-02 Grade 1.



SERVUS HZT Hazmat boots feature stainless steel midsoles tested to ANSI Z41 PT 99 Section 5 Puncture Resistance standards. Meet Canadian Standard CSA Z195 Grade 1.





## Servus PRO+™ Chemical-Resistant Footwear

Dual design outsole + dual compounding = PRO+ performance for enhanced slip resistance, especially on wet and wet/oily surfaces. The PRO+ takes the original SERVUS PRO™ to even higher levels of performance on the job. Dual design and dual compounding also equates to increased footbed stability, “grabbin” the walking surface. The outsole frame adds increased lateral stability.

- Safety styles meet ANSI Z41 PT 99 Section 1 I/75; C/75 — indicated by the yellow midsole trimline.



3-stage molded construction offers seamless, waterproof comfort.

- Upper compounds are formulated for specific organic chemical-resistance.
- Outsole compounds are formulated for long wear and slip-resistance.

- Advanced outsole pattern squeegees fluids to outer channels expelling them from underfoot, prohibiting hydroplaning and providing a better contact between the outsole and floor.
- Dual outsole design and dual compounding contributes to enhanced slip-resistance in wet and oily/wet environments.
- Removable and washable ergonomic insoles.
- Extended and ribbed steel shanks for support.
- Made in U.S.A. — guaranteed 100% waterproof.



75105



75106



75105

15" Gray/Yellow/Beige  
SERVUS PRO+ Safety Boot



SAFE-TOE steel toe construction.  
Beige TDT self-cleaning outsole.  
Ergonomic removable insole.  
Made in U.S.A.

Whole sizes 5-15



75106

15" Gray/Red/Beige  
SERVUS PRO+ Knee Boot



Beige TDT self-cleaning outsole.  
Ergonomic removable insole.  
Made in U.S.A.

Whole sizes 5-15



## Servus PRO™ Chemical-Resistant Footwear

SERVUS PRO (PROcessing) footwear is created with Triple Density Technology to withstand the organic chemical deterioration common in meat processing and petrochemical industries.

- Safety styles meet ANSI Z41 PT 99 Section 1 I/75; C/75 — indicated by the yellow midsole trimline.



3-stage molded construction offers seamless, waterproof comfort.

- Upper compounds are formulated for specific organic chemical-resistance.

- Outsole compounds are formulated for long wear and slip-resistance.

- Removable and washable ergonomic insoles.
- Extended and ribbed steel shanks for support.
- Made in U.S.A. — guaranteed 100% waterproof.



75101  
75103 Women's

75102  
75104 Women's



### 75101

15" Gray/Yellow/Black  
SERVUS PRO Safety Boot



SAFE-TOE steel toe construction.  
Black TDT self-cleaning outsole.  
Ergonomic removable insole.  
Made in U.S.A.

Whole sizes 5-15



### 75102

15" Gray/Red/Black  
SERVUS PRO Knee Boot



Black TDT self-cleaning outsole.  
Ergonomic removable insole.  
Made in U.S.A.

Whole sizes 5-15

### 75104 WOMEN'S

(As 75102 in women's sizes.)

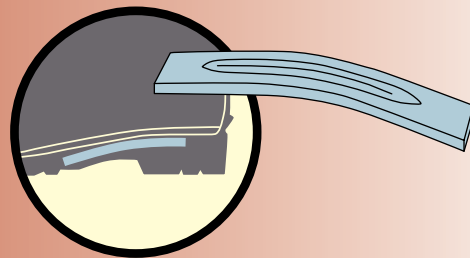
Whole sizes 5-11

### 75103 WOMEN'S

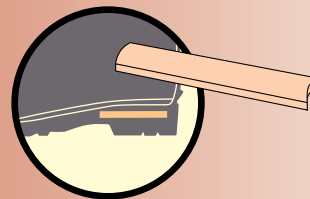
(As 75101 in women's sizes.)

Whole sizes 5-11

With all SERVUS TDT  
3-stage molded footwear,  
the details make the difference...



**SERVUS Extended Steel Shanks**  
are thicker, longer, and wider as well as  
curved and ribbed for strength.  
They fully bridge the heel and  
instep for effective support.



**Ordinary Steel Shanks**  
are short, flat, weak and placed  
too far in the heel to be effective.







## Servus XTP™ Chemical-Resistant Footwear

SERVUS XTP "Xtra Traction Performance" footwear is created with TDT Triple Density Technology® to withstand the organic chemical deterioration common in poultry and fish processing, as well as oil rigs, mining, and general industrial applications.

- **Safety styles meet ANSI Z41 PT 99 I/75; C/75 — as indicated by the yellow midsole trimline.**
- **3-stage molded construction offers seamless, waterproof comfort.**



- **Upper compounds are formulated for specific chemical-resistance.**
- **Outsole compounds are formulated for long-wear and slip-resistance.**

- **Self-cleaning outsoles with greater surface-to-surface traction for both indoors and outdoors.**
- **Removable and washable FOOT FORM contour cushion insoles.**
- **Extended steel shanks for complete support.**
- **Made in U.S.A. — guaranteed 100% waterproof.**



### TDT™ Footwear

SERVUS XTP boots are shown on the job in salt water environments at the Shedd Aquarium, Chicago.

Here SERVUS Triple Density Technology™ provides long-wearing, waterproof, chemical-resistant, and slip-resistant foot protection in a variety of corrosive and organic fluid mixes.

The sure fit and lightweight comfort of XTP boots make them ideal for all day wear.

- **POULTRY PROCESSING**
- **FISH PROCESSING**
- **CANNERIES**
- **BREWERIES AND BOTTLING**
- **PETROCHEMICAL PLANTS**
- **OFFSHORE OIL RIGGING**
- **MINING**
- **GENERAL INDUSTRY**



75108  
75110 Women's

75109  
75111 Women's



**75108**  
**15" Black/Red/Gray**  
**SERVUS XTP Knee Boot**



Gray TDT self-cleaning outsole.  
FOOT FORM contour insole.  
Made in U.S.A.

**Whole sizes 5-15**

### 75110 WOMEN'S

(As 75108 in women's sizes.)

**Whole sizes 5-11**



**75109**  
**15" Black/Yellow/Gray**  
**SERVUS XTP Safety Boot**



SAFE-TOE steel toe construction.  
Gray TDT self-cleaning outsole.  
FOOT FORM contour insole.  
Made in U.S.A.

**Whole sizes 5-15**

### 75111 WOMEN'S

(As 75109 in women's sizes.)

**Whole sizes 5-11**



## SUPREME Knee Boots

SERVUS SUPREME multi-blends are injection molded of advanced PVC and polyurethane compounds to counteract the deterioration common in harsh fats, fluids and chemicals.

- **Safety styles meet ANSI Z41 PT 99 Section 1 Impact/75 and Compression/75 toe protection.**
- **2-stage injection molded construction provides the ability to compound for durability, chemical-resistance, and slip-resistance.**
- **Removable and washable cushion insoles.**
- **Choice of Angle Cleat or Chevron outsoles.**
- **Extended, double-ribbed steel shanks for added strength and complete support.**
- **Made in U.S.A. — guaranteed 100% waterproof.**

- **AGRI-CHEMICALS**
- **BREWERIES**
- **DAIRY PROCESSING**
- **FOOD PROCESSING**
- **FISH PROCESSING**
- **POULTRY PROCESSING**
- **PETROCHEMICALS**
- **RED MEAT PROCESSING**



72204



72202



**72204**  
**15" Field Tan SUPREME**  
**Safety Knee Boot**



SAFE-TOE steel toe construction.  
Beige Angle Cleat sole and heel.  
Extended steel shank.  
Made in U.S.A.

**Whole sizes 6-13**



**72202**  
**15" Field Tan SUPREME**  
**Safety Knee Boot**



SAFE-TOE steel toe construction.  
Beige Chevron sole and heel.  
Extended steel shank.  
Made in U.S.A.

**Whole sizes 6-13**

**72203** (not shown)  
(As 72204 without a steel toe.)  
**Whole sizes 6-13**

**CHEVRON**  
**Slip-Resistant Sole**

# RANGER ANSI safety footwear... for the heavy duty jobs.



## Workers who depend on foot protection, depend on RANGER toughness and reliability.

Only RANGER shoes and boots are a match for the hazardous, heavy duty jobs. Each is packed with the materials and construction features needed to provide job-designed comfort and protection for the long haul. Each is independently tested and classified to meet specific requirements of the AMERICAN NATIONAL STANDARDS INSTITUTE PROTECTIVE FOOTWEAR STANDARD ANSI Z41 PT 99.

### Watch for these key features to give the best possible protection in rugged work environments:

- A** RANGER rubber is industrial weight for strength and durability and compounded for ozone resistance.

- B** RANGER combines several layers of rubber and safety components for comfort and protection. Construction is vulcanized to assure waterproofness.

- C** RANGER adds additional layers of high abrasion reinforcement rubber whenever the job demands boots with maximum strength and stability.

- D** RANGER fabric linings are soft and durable. Feet slide easily in and out.



Built-in polyfoam insulated RANGER boots are designed to keep feet closer to body temperature in extremes of heat and cold.

- E** Extra-thick, knurled overlays for toe and heel help protect against knocks and wear.

- F** Ridged ultra composite shanks fully bridge the instep to provide added strength, support and protection for the arch.



SAFE-TOE steel toe construction meets ANSI Z41 PT 99 Section 1 Impact/75 and Compression/75 toe protection. Meets Canadian Standard CSA Z195-02 Grade 1.



SAFE-STEP stainless steel midsoles meet ANSI Safety Specifications: Z41 PT 99 Section 5 underfoot Puncture Resistance protection. Thin enough to flex; strong enough to protect. Meets Canadian Standard CSA Z195 Grade 1.



Both RANGER TURTLEBACK™ and FLEXGARD™ metatarsal guard boots meet ANSI Safety Specifications: Z41 PT 99 Section 2 Upper Foot Impact and Compression Protection. Choose TURTLEBACK anchored guards for extra protection, or FLEXGARD "floating" guards for extra flex and comfort.



Removable FOOT FORM contour cushion insoles provide proper cushioning and arch support for all day comfort while helping to fight foot and leg fatigue – protecting against unnecessary stress and muscle pain. Removable, washable, and replaceable.



RANGER offers a selection of outsole tread patterns designed to provide traction and stability in a variety of working conditions – both indoors and outdoors.



- MINING
- HEAVY MANUFACTURING
- HEAVY CONSTRUCTION
- FORESTRY
- DEMOLITION

Since its inception, RANGER has been the leader in safety footwear for the Mining Industry.



RANGER protective footwear is classified by **Underwriter's Laboratories Inc.®** in accordance with ANSI Z41 PT 99 American National Standard for Personal Protection – Protective Footwear



RANGER protective footwear also satisfies the CSA Canadian Safety Association STD Z195 Grade 1 specifications for safety footwear with steel toes and steel midsoles.



Made in the U.S.A.





## Full Metatarsal Guard Rubber Boots

- All meet ANSI Z41 PT 99 Section 1 for Impact/75 and Compression/75; Section 2 for Metatarsal; and Section 5 for Puncture protection.
- Redesigned TURTLEBACK metatarsal guards have greater flexibility and comfort without sacrificing anchored and fixed protection on all sides.
- Knurled, high abrasion metatarsal and heel overlays for longer wear.
- SAFE-STEP Puncture Resistant Midsoles are stainless steel and provide maximum protection.
- Specialized rubber compound prevents ozone deterioration.
- Outsoles are high abrasion rubber for durability and longer wear.
- FOOT FORM contour cushion insoles are removable and washable.
- Ultra composite shanks reinforce construction and support the feet.
- Made in U.S.A. — 100% waterproof.

### OVERSHOES FOR METATARSAL GUARD LEATHER FOOTWEAR

**7362**

**10" Black Rubber Overshoe for Metatarsal Guard Footwear**

Four buckles.  
Anti-Skid Bar Tread sole and heel.  
Made in U.S.A.

**Whole sizes 8-15**



**7361**

**Black Rubber Overshoe for Metatarsal Guard Footwear**

Anti-Skid Bar Tread outsole.  
Made in U.S.A.

**Whole sizes only 7-15**



2155



R2145



**R2145**

**16" Black TURTLEBACK Knee Boot**



SAFE-TOE steel toe construction.  
Anchored metatarsal guard.  
SAFE-STEP stainless steel midsole.  
SURE-LOC sole and heel.  
Made in U.S.A.

**Whole sizes 6-14**



**2155**

**12" Red TURTLEBACK Safety Pac**



SAFE-TOE steel toe construction.  
Anchored metatarsal guard.  
SAFE-STEP stainless steel midsole.  
SURE-LOC sole and heel.  
Made in U.S.A.

**Whole sizes 6-13**



## Flexible Metatarsal Guard Boots

- All meet ANSI Z41 PT 99 Section 1 for toe Impact/75 and Compression/75; Section 2 for Metatarsal; and Section 5 for Puncture protection.
- Built-in FLEX-GARD metatarsal guards float on top of the foot for flexible protection.
- Knurled, high abrasion metatarsal and heel overlays for longer wear.
- SAFE-STEP puncture resistant midsoles are stainless steel and provide maximum protection.
- Specialized rubber compound prevents ozone deterioration.
- Outsoles are high abrasion rubber for durability and longer wear.
- FOOT FORM contour cushion insoles are removable and washable.
- Ultra composite shanks reinforce construction and support the feet.
- Made in U.S.A. — 100% waterproof.

**RANGER FLEX-GARD Metatarsal Shield** offers more flexible comfort while meeting the safety requirements of ANSI Z41 PT 99 Section 2 testing for metatarsal foot protection.

### Flex-Gard Metatarsal Safety Pac

Heavy hard rubber "floating" metaguard built in vamp area at the back edge of the steel toe for Metatarsal foot protection. One-piece stainless steel midsole for puncture resistant protection. Rubber upper formulation is oil resistant and resists cracking due to hydrocarbons and ozone attack. High abrasion foxing for long wear. Heel counter to prevent slippage and add comfort while walking.



2159



**2159**

**15" Black FLEX-GARD Safety Pac**



SAFE-TOE steel toe construction. Vibram® molded rubber outsole. SAFE-STEP stainless steel midsole. Made in U.S.A.

**Whole sizes 6-15**



2169

2149

2165



**2149**

**12" Olive Drab FLEX-GARD Safety Pac**



Heavy Trac Tread sole and heel. Made in U.S.A.

**Whole sizes 5-13**

**2169**

**16" Olive Drab FLEX-GARD Safety Pac**



Heavy Trac Tread sole and heel. Made in U.S.A.

**Whole sizes 5-14**

**2165**

**INSULATED 12" Red FLEX-GARD Safety Pac**



Heavy Trac Tread sole and heel. Full polymeric foam insulation. Made in U.S.A.

**Whole sizes 6-13**



## Rubber Safety Shoes

Only the best industrial grade materials and hand-layered construction will do for these top-of-the-line waterproof safety shoes. Pick the style best designed for your needs.

- All meet ANSI Z41 PT 99 Section 1 for Impact/75 & Compression/75 toe protection.
- Premium, long-wearing commercial grade rubber with safety yellow trim.
- Specialized rubber compound prevents ozone deterioration.
- Flexible, hand-layered construction.
- Tough, comfortable fabric linings for easy on and off.
- Cushion insoles reduce fatigue for all-day comfort.
- Ultra composite shanks reinforce construction and support the feet.
- Made in U.S.A. — 100% waterproof.



R1141



1142



1152

**NEO-GRIP Slick-Floor Sole & Heel**



**R1141**  
**6" Black 5-Eyelet Safety Work Shoe**



SAFE-TOE steel toe construction. Heavy Trac Tread sole and heel. 5-eyelet lacing. Made in U.S.A.

**Whole and half sizes 7-12**  
**Whole sizes 5-6, 13-14**



**1142**  
**6" Black Buckle Safety Work Shoe**



SAFE-TOE steel toe construction. Heavy Trac Tread sole and heel. Quick-release buckle. Made in U.S.A.

**Whole and half sizes 5-12**  
**Whole sizes 13-15**



**1152**  
**6" Black Buckle Safety Work Shoe**



SAFE-TOE steel toe construction. SURE-LOC suction sole and heel. Quick-release buckle. Made in U.S.A.

**Whole and half sizes 5-12**  
**Whole size 13**





## Rubber Safety Boots

- All meet ANSI Z41 PT 99 Section 1 for Impact/75 and Compression/75 toe protection.
- Premium, long-wearing commercial grade rubber with safety yellow trim.
- Specialized rubber compound prevents ozone deterioration.
- Flexible, hand-layered construction.
- Tough, comfortable fabric linings for easy on and off.
- Cushion insoles reduce fatigue for all-day comfort.
- Ultra composite shanks reinforce construction and support the feet.
- Made in U.S.A. — 100% waterproof.



2144



### SAFE-STEP STAINLESS STEEL MIDSOLE

Built-in flexible stainless steel midsole provides extra protection underfoot, minimizing accidental punctures in Style 2144.



A Choice of Leg Height Protection



**2143**  
**36" Black Safety Hip Boot**



SAFE-TOE steel toe construction. Heavy Trac Tread sole and heel. Adjustable, stay-tight belt strap. Made in U.S.A.

**Whole sizes 6-14**



**2142**  
**26" Black Safety Stormking**



SAFE-TOE steel toe construction. Heavy Trac Tread sole and heel. Adjustable, snug-up side strap. Made in U.S.A.

**Whole sizes 6-15**



**2141**  
**16" Black Safety Knee Boot**



SAFE-TOE steel toe construction. Heavy Trac Tread sole and heel. Made in U.S.A.

**Whole sizes 5-14**



**2144**  
**16" Black Safety Knee Boot**



SAFE-TOE steel toe construction. SAFE-STEP steel midsole. Heavy Trac Tread sole and heel. Made in U.S.A.

**Whole sizes 5-15**



## Rubber Safety Boots

- All meet ANSI Z41 PT 99 Section 1 for Impact/75 and Compression/75 toe protection.
- Premium, long-wearing commercial grade rubber with safety yellow trim.
- Specialized rubber compound prevents ozone deterioration.
- Flexible, hand-layered construction.
- Tough, comfortable fabric linings for easy on and off.
- Cushion insoles reduce fatigue for all-day comfort.
- Ultra composite shanks reinforce construction and support the feet.
- Made in U.S.A. — 100% waterproof.



6145



**6145 INSULATED**  
**12\"**



SAFE-TOE steel toe construction.  
Full polymeric foam insulation.  
Heavy Trac Tread sole and heel.  
Made in U.S.A.

**Whole sizes 6-14**



**6147 INSULATED**  
**12\"**



SAFE-TOE steel toe construction.  
Full fleece insulation.  
Removable felt insole.  
Heavy Trac Tread sole and heel.  
TUFF-SCUFF toe abrasion layer.  
Made in U.S.A.

**Whole sizes 6-13**

**Deep Pile Fleece  
Insulation**  
blankets feet and legs  
in soft, natural warmth.



6147

# Superior RANGER Electrical Hazard safety.



## Over-the-Foot Dielectrics

RANGER Dielectrics are high-quality, over-the-foot boots built for electrical hazard situations. DO NOT wear these specialized boots near explosives or on any job requiring conductive footwear. Check with your sales representative if there is a question.

- All meet ANSI Z41 PT 99 Section 1 for Impact and Compression resistance requirements of Class 75, as well as Section 4 Electrical Hazard Protection as demonstrated with the Dielectric Green Label.
- Premium grade rubber with safety yellow trim.
- Special ozone resistant rubber compound.
- Flexible hand-layered construction.
- Durable nylon linings for easy on and off.
- Built-in cushion insoles reduce fatigue for all-day comfort.
- Ultra composite shanks reinforce construction and support the feet.
- Made in U.S.A. — 100% waterproof.

### Every RANGER Dielectric is shock-tested!

Each RANGER Dielectric must pass NSP's rigid resistance and leakage requirements that are double the industry standards. Every boot is individually hydroschock tested with 2500 Volts of Direct Current (both soles and uppers) to show resistance of 500 megohms (with no more than .005 milliamps leakage).

### This is more than double most recognized requirements!

RANGER Dielectrics are also tested at 20,000 Volts ac per the electrical hazard requirements of ANSI Z41 PT 99 Section 4 (dry test).

### In fact, independent laboratory testing proves RANGER surpasses the ANSI requirements by 50%!

No other Dielectric footwear can match RANGER for quality, comfort and fully tested safety assurance.



6141

**NEO-GRIP Slick-Floor Sole & Heel** with flatter surface-to-surface, razor-edge tread is ideal for indoor protection.



R6130



6131

**Trac Tread Sole & Heel** is a good choice for outdoor protection.



**6141**  
**7" Red Dielectric Safety Pac**



SAFE-TOE steel toe construction.  
NEO-GRIP sole and heel.  
Made in U.S.A.

Whole sizes 5-13



**R6130**  
**12" Red Dielectric Safety Pac**



SAFE-TOE steel toe construction.  
NEO-GRIP sole and heel.  
Made in U.S.A.

Whole sizes 6-13



**6131**  
**7" Red Dielectric Safety Pac**



SAFE-TOE steel toe construction.  
Trac Tread sole and heel.  
Made in U.S.A.

Whole sizes 6-13



NSP steel toe footwear is classified by **Underwriter's Laboratories Inc.®** in accordance with **ANSI Z41 PT 99 American National Standard for Personal Protection – Protective Footwear**



# NSP has an insulated boot for every chilling job out there.

## SERVUS®

### INSULATED Leather Top Safety Pacs

Safety and outdoor footwear insulated to protect in freezing and sub-freezing conditions.

- Safety styles meet ANSI Z41 PT 99 for Impact/75 and Compression/75 toe protection.
- Rugged leather uppers.
- Watertight rubber bottoms for the protection of feet.
- Lightweight THERMOLITE® removable, washable, replaceable liners with 3/4" foam insulation.
- Extended and ribbed supporting steel shanks.



COMFORT ZONE to -40°F

#### "Comfort Zone" Protection

NSP identifies the range of temperatures at which each of their insulated leather top pac's will remain comfortable for a person with normal circulation and working at a steady pace of activity.



COMFORT ZONE to -75°F

A422

### NSP Footwear for Refrigeration & Extreme Cold

Cold feet can drain energy needed for the body to work well. Discomfort and fatigue steal from production efficiency. NSP insulated footwear features rugged construction, using proven insulating materials, to help keep everyone at peak performance.

- COLD WEATHER CONSTRUCTION
- OUTDOOR WORK
- REFRIGERATION

#### Double-Insulated Arctic Tamer

has built-in polyfoam insulation PLUS full THERMOLITE® liners to warm feet on the coldest days.



A421

COMFORT ZONE to -50°F



#### A421 INSULATED -50°F

##### 10" Black Leathertop Pac



SAFE-TOE steel toe construction.  
SAFE-STEP stainless steel midsole.  
Black leather top.  
Black rubber bottom.  
Cleat sole and heel.  
Steel shank for additional support.  
Removable THERMOLITE® and foam insulating liner.  
3/8" felt midsole for added warmth underfoot.

Whole sizes 6-15



#### A422 DOUBLE-INSULATED -75°F

##### 10" Black Leathertop Pac



SAFE-TOE steel toe construction.  
Black leather top.  
Black rubber bottom.  
Bar-Grip™ sole and heel.  
Steel shank for additional support.  
Removable THERMOLITE® and 3/4" foam insulating liner.  
Built-in, double-insulating foam.  
3/8" felt midsole for added warmth underfoot.

Whole sizes 7-14



## INSULATED Leather Top Pacs

RANGER Leather Top footwear combines the feel, fit, and lacing stability of leather footwear with the waterproof security of rubber boots. Pillow soft THERMOLITE® bootie liners blanket the feet in plush warmth.

- **Rugged leather uppers.**
- **Waterproof rubber bottoms.**
- **Lightweight THERMOLITE® removable, washable, replaceable liners with 3/4" foam insulation.**
- **Extended and ribbed supporting steel shanks.**



### A417 THERMOLITE® Replacement Liners

Lightweight THERMOLITE® liners filled with 3/4" foam insulation. Smooth, easy-on fabric linings. Removable, washable, replaceable. Fits A421, A422, A423, A455, A465, A466 and most other insulated leather tops.

**Whole sizes 7-14**



### A423 WOMEN'S EXCURSION INSULATED -50°F 9" Camel/Marine Blue Leather Top Pac



Camel leather top. Blue molded Flex-Lite bottom. Dual-Lite™ molded outsole. Steel shank for additional support. Heel kick-off.

**Women's sizes 5-11**



### A455 MEN'S WYOMING INSULATED -40°F 10" Brown Leather Top Pac



Brown leather top. Brown rubber bottom. Self-cleaning Bar-Grip™ outsole. Steel shank for additional support.

**Whole sizes 7-14**



### A466 MEN'S SUMMIT INSULATED -60°F 10" Brown 100% Waterproof Pac



Brown waterproof leather top. Black molded Tec-Lite bottom. Steel shank for additional support. Molded-in heel kick.

**Men's sizes 7-14**

### A465 MEN'S SUMMIT INSULATED -60°F (not pictured) 10" Black 100% Waterproof Pac

Same as A466 but black.

**Men's sizes 7-14**



**SERVUS**  
MADE IN USA

## INSULATED Over-the-Foot Rubber Footwear

SERVUS insulated footwear is an ideal choice for many working conditions. Like any good insulation, these boots work in the cold to keep feet warm, and in the heat to keep feet closer to body temperature.

- **Premium commercial grade rubber.**
- **Specialized rubber compound prevents ozone deterioration.**
- **Flexible, hand-layered construction for extra comfort and strength.**
- **Tough, comfortable fabric linings for easy on and off.**
- **Cushion insoles reduce fatigue for all-day comfort.**
- **Ultra composite shanks reinforce construction and support the feet.**



24503



11190



**24503 INSULATED**  
**13" Olive Full-Lace Pac**



Heavy Trac Tread sole and heel.  
Polymeric foam insulation.  
Made in U.S.A.

**Whole sizes 5-14**



**11190 INSULATED**  
**16" Olive Knee Boot**



Heavy Trac Tread sole and heel.  
Polymeric foam insulation.  
Made in U.S.A.

**Whole sizes 5-14**

## Seafarer™ All-Weather Boot

Extra heavy duty rubber is layered and insulated to warm and protect feet in the roughest conditions.



11490



**11490 INSULATED**  
**16" Black SEAFARER™**  
**Knee Boot**



Heavy duty pull-on loops.  
Trac Tread sole and heel.  
Polymeric foam insulation.  
Made in U.S.A.

**Whole sizes 6-14**





## INSULATED Footwear

- Safety styles meet ANSI Z41 PT 99 for Impact/75 and Compression/75 toe protection.
- Premium, long-wearing commercial grade rubber.
- Specialized rubber compounds prevent ozone deterioration.
- Tough, comfortable fabric linings for easy on and off.
- 100% waterproof.

### Lineman's All-Weather Zip Pac

Lineman's over-the-foot pac — loaded with ANSI safety features — plus waterproof, insulated comfort in rain, sleet and snow.



21622



**21622 INSULATED**  
**12" Black Lineman's Zip Pac**



SAFE-TOE steel toe construction.  
SAFE-STEP stainless steel midsole.  
Adjustable side strap.  
Heavy Trac Tread sole and heel.  
Polymeric foam insulation.  
3/8" insulating felt midsole.  
Zipper.  
Made in U.S.A.

**Whole sizes only 6-13**

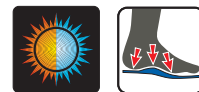


78590

**Now lighter  
in weight**  
for all day comfort and  
less work fatigue.



**78590 INSULATED**  
**16" Marsh Brown Pac**



Contour-shaped washable insole.  
V Bar Cleat sole and heel.  
Polymeric foam insulation.

**Whole sizes 7-14**

# SERVUS puts some real bite into slip-resistant protection.



## LITE 'N GRIT™ Overshoes

These long-wearing PVC overshoes resist many industrial chemicals. Plus, the aluminum oxide grit will give you traction on slick surfaces you can't get with any other shoe or boot.

- **High stretch, seamless molded construction for 100% waterproof protection.**
- **Aluminum oxide grit is compressed into the PVC outsole for superior slip-resistance.**
- **Made in the U.S.A.**

### SIZING CONVERSIONS

<b>S</b> fits Men's Sizes <b>6 – 7</b>	Women's Sizes <b>7 – 9</b>
<b>M</b> fits Men's Sizes <b>8 – 9</b>	Women's Sizes <b>10 – 11</b>
<b>L</b> fits Men's Sizes <b>10 – 11</b>	Women's Sizes <b>12 – 13</b>
<b>XL</b> fits Men's Sizes <b>12 – 13</b>	
<b>XXL</b> fits Men's Sizes <b>14 – 15</b>	
<b>XXXL</b> fits Men's Sizes <b>16 – 17</b>	



APPROVED



SR108  
(Trimmed at 10")



SR108  
(Original 17" height)



SR105



### SR105

#### Black SERVUS LITE 'N GRIT 4" PVC Overshoe

High quality stretch PVC seamless molded construction. Cross ribbed aluminum oxide grit pattern is permanently compressed in the outsole. Made in U.S.A.

**Whole sizes**  
**S, M, L, XL, XXL, XXXL**

### SR108 Trims from 17" to 10"



### SR108

#### 17" or 10" Black LITE 'N GRIT PVC Overshoe

High quality stretch PVC seamless molded construction. Trim ribs for 10" height if preferred. Cross ribbed aluminum oxide grit pattern permanently compressed in the outsole. Made in U.S.A.

**Whole sizes**  
**S, M, L, XL, XXL, XXXL**

## Servus SF™ Grit Overboots

- **SERVUS SF Grit Super-Fit overboots are designed with more room to protect today's bulkier leather footwear with wide toes, wedged outsoles, and knobby treads.**
- **Aluminum oxide grit is compressed into the PVC outsole for superior slip-resistance.**
- **Made in the U.S.A.**

### SIZING CONVERSIONS

**SMALL** fits Men's Sizes **6 – 8**

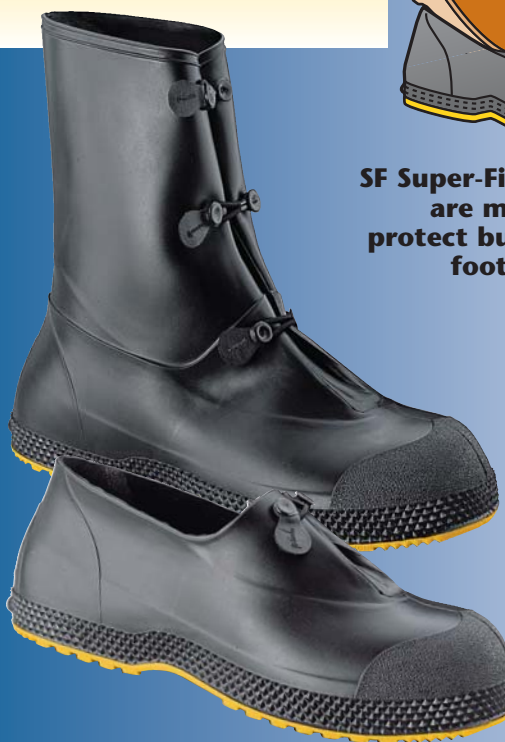
**MEDIUM** fits Men's Sizes **9 – 10**

**LARGE** fits Men's Sizes **11 – 13**

**X-LARGE** fits Men's Sizes **14 – 15**



**SF Super-Fit Overboots are made to protect bulky leather footwear**



SR110

SR111



### SR110

#### SERVUS SF Grit 12" Overboot

Heavy-duty PVC construction. Super-sized styling. SF wide grip outsole with aluminum oxide grit. Made in U.S.A.

**Whole sizes S, M, L, XL**



### SR111

#### SERVUS SF Grit 4" Overboot

Heavy-duty PVC construction. Super-sized styling. SF wide grip outsole with aluminum oxide grit. Made in U.S.A.

**Whole sizes S, M, L, XL**

# Handy, quick-fit second soles for slippery conditions.



## Servus Studs Second Soles

Don't slip on ice and slick, greasy surfaces. These SERVUS oversoles are really second soles you add on in treacherous footing. Long lasting carbide studs bite into ice and frozen snow. This is traction you can't get with regular outsoles.

- **Extra strong stretch rubber to fit snugly over shoes and boots.**
- **Practical slip-resistant oversoles store easily in a pocket or work belt until they are needed.**
- **Handy heel tab grips for easy on and off.**
- **Tough, tungsten carbide studs on SERVUS Studs are easily replaced.**
- **Made in the U.S.A. under U.S. Patent No. D377,710 and other Patents Pending.**



SR101



*"It is an extraordinary supplier that will get out of his house on a Sunday to take care of a customer in time of emergency."*

*Dave Blankenship  
Branch Manager  
Drago Supply  
Little Rock, Arkansas*

On December 30, 2000 an ice storm blanketed southwest Arkansas with four inches of ice. As utility workers set out to repair the damages, they found themselves ill prepared for such an emergency. That's when they turned to Norcross. On Sunday, December 31, Dave Blankenship of Drago Supply phoned in an emergency order for Servus Studs, and the NSP team sprung into action. On Sunday afternoon, New Year's Eve, the order was filled and shipped to utility workers whom, with the help of Servus Studs, safely repaired the damages on Monday morning.

### SIZING CONVERSIONS

#### Men's

**S/M** fits Men's Sizes **7 – 9**

**L** fits Men's Sizes **10 – 12**

**XL** fits Men's Sizes **13 – 15**

**XXL** fits Men's Sizes **16+**

#### Women's

**S/M** fits Women's Sizes **9 – 11**

**L** fits Women's Sizes **12 – 13**



#### SR101

##### SERVUS Studs for Work Shoes & Boots

Replaceable Tungsten carbide studs are fixed in each stretch outsole cover.  
Made in U.S.A.

**Whole sizes S/M, L, XL, XXL**



#### SR201 SERVUS Replacement Studs Kit

Replaces worn studs for SR101. Tough tungsten carbide studs. Stud extractor tool. Stud inserter tool. Made in U.S.A.



# Hard working weather tamers designed for every job!



## Over-the-Foot Rubber Footwear

NORTHERNER and SERVUS are the brands America has relied on over the years for dependable, long-wearing waterproof protection in inclement weather and wet working conditions. With new styling and new materials, combined with NSP global sourcing, the quality and value of this all-purpose footwear has never been better.

- **Safety styles meet ANSI Z41 PT 99 Section 1 for Impact/75 and Compression/75 toe protection.**
- **Premium commercial grade rubber uppers.**
- **Special rubber compound prevents ozone deterioration.**
- **Flexible hand-layered construction.**
- **Tough, comfortable fabric linings for easy on and off.**
- **Cushion insoles reduce fatigue for all-day comfort.**
- **Ultra composite shanks reinforce construction and support the feet.**
- **Made in U.S.A. — 100% waterproof.**

- **AGRICULTURE**
- **CONSTRUCTION**
- **FARM & HOME**
- **FISHING & FISHERIES**
- **IRRIGATION**
- **MANUFACTURING**
- **OUTDOOR SPORTS**
- **OUTDOOR WORK**
- **PUBLIC WORKS**



21607



11134



11135



**21607 SERVUS**  
**12" Olive Drab Engineer Pac**



SAFE-TOE steel toe construction.  
High Abrasion Trac Tread outsole.  
Made in U.S.A.

**Whole sizes 6-13**



**11134 NORTHERNER**  
**16" Olive Drab Knee Boot**

Heavy Trac Tread sole and heel.  
Shovel shank reinforcing strip  
provides extra comfort and  
wear-resistance.  
Made in U.S.A.

**Whole sizes 6-14**



**11135 NORTHERNER**  
**26" Olive Irrigation Boot**

Heavy Trac Tread sole and heel.  
Shovel shank reinforcing strip for  
extra comfort and wear-resistance.  
Made in U.S.A.

**Whole sizes 5-14**

SERVUS®

RANGER™

## Over-the-Foot Rubber Footwear

- Safety styles meet ANSI Z41 PT 99 Section 1 for Impact/75 and Compression/75 toe protection.
- Special rubber compound.
- Flexible hand-layered construction.
- Tough, comfortable fabric linings for easy on and off.
- Built-in cushion insoles absorb shock and fight fatigue.
- Ultra composite shanks reinforce construction and support the feet.
- Sourced to NSP specifications — 100% waterproof.



T111



A382



A383



A111



### T111 SERVUS

#### 17" Black Irrigation Boot

High Abrasion Trac Tread outsole.  
Shovel-shank reinforcing strip.  
Built-in cushion insole.

Whole sizes 3-15



### A382 SERVUS

#### 16" Black/Yellow Swamp Boot



SAFE-TOE steel toe construction.  
Beveled Bar Cleat sole and heel.  
Built-in cushion insole.

Whole sizes 5-14



### A383 SERVUS

#### 16" Black/Rust Swamp Boot

Beveled Bar Cleat sole and heel.  
Built-in cushion insole.

Whole sizes 4-14



### A111 RANGER

#### 26" Forest Green Stormking

Heavy Trac Tread outsole.  
Shovel shank reinforcing strip.  
Built-in cushion insole.

Whole sizes 3-15



## Chest Waders & Hip Boots

- Safety styles meet ANSI Z41 PT 99 Section 1 for Impact/75 and Compression/75 toe protection.
- Premium commercial grade rubber uppers.
- Special rubber compound prevents ozone deterioration.
- Flexible hand-layered construction.
- Tough, comfortable fabric linings for easy on and off.
- Cushion insoles reduce fatigue for all-day comfort.
- Steel shanks reinforce construction and support the feet.
- Made to Servus specifications — 100% waterproof.



11146



### 11146

#### 33" Servus Hip Boot

High abrasion Trac Tread sole and heel. Shovel shank reinforcing strip provides extra comfort and wear-resistance.

**Whole sizes 5-14**



11444



### 11444

#### 31" Black SEAFARER™ Stormking

Heavy duty pull-on loops. Trac Tread sole and heel. Boot Duct Lined. Made in U.S.A.

**Whole sizes 6-14**



T112



### T112

#### 36" Black Safety Hip Boot



SAFE-TOE steel toe construction. Heavy Trac Tread sole and heel. Built-in cushion insole.

**Whole sizes 7-15**



# Overboots for super-sized styles

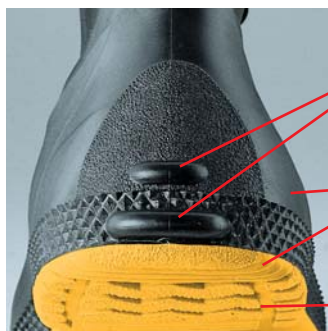


## Servus SF™ Super-Fit Injection Molded Overboots

- **SERVUS SF Super-Fit overboots** are designed with more room to protect today's bulkier leather footwear with wide toes, wedged outsoles and knobby treads.
- **Dual compounding molds stretchable uppers to long-wearing, slip-resistant outsoles.**
- **Innovative new closure** — easy-to-use and durable.
- **Reinforced design at critical stress points.**
- **Seamless molded construction is 100% waterproof.**
- **Made in U.S.A.**



**SERVUS SF Super-Fit Overboots** are the first boots made in America to fit super-size work and recreational footwear. Popular leather styles with padding, insulation, wedge outsoles, wide toe spaces and bulky outsoles can now be protected from snow, slush, salt and other deteriorating elements.  
**Fit bulky boots up to sizes 15 EEE!**



**Kick-Off Lugs** are permanently molded on the heel and extra large to help remove overboot easily.

**Dual Compounding** permits a light, stretchable upper to be molded to a high abrasion and slip-resistant outsole.

**Self-Cleaning Treads** on the outsole keep gripping edges free for better traction.



**11001**

### SERVUS SF 12" Overboot

Super-sized styling to fit over bulky leather footwear.  
SF wide grip outsole.  
Made in U.S.A.

**Whole sizes S, M, L, XL**

### SIZING CONVERSIONS

**SMALL** fits Men's Sizes **6 – 8**

**MEDIUM** fits Men's Sizes **9 – 10**

**LARGE** fits Men's Sizes **11 – 13**

**X-LARGE** fits Men's Sizes **14 – 15**

**Boot Buttons** are molded as part of making the boot — cannot leak like add-on snaps.

**Rugged Elastic Loops** are attached on one side and draw across the generous gusset to fit snugly and comfortably with plenty of flex.



**Tabbed Grips** are stitched on the closure loops — can be easily grasped and pulled with one hand — *even with gloves!*

**Reinforcement Bumpers** on heel and toe provide extra protection where it's needed.



**11003**

**11003**

### SERVUS SF 4" Overboot

Super-sized styling to fit over bulky leather footwear.  
SF wide grip outsole.  
Made in U.S.A.

**Whole sizes S, M, L, XL**



# SERVUS®

## Rubber Overshoes

- Premium lightweight rubber formulated for stretching over work footwear.
- Flexible hand-layered construction.
- Tough, comfortable fabric linings for easy on and off.
- Sourced to SERVUS specifications — 100% waterproof.



A380



### A380 SERVUS 18" Yellow Strap-On

Adjustable snug-up side strap.  
Cross Rib outsole.  
Net lining.

Whole sizes 8-16



A351



### A351 SERVUS

13" Black 5-Buckle  
Rugged Ribbed outsole.  
Net lining.

Whole sizes 6-15



### T314 SERVUS 10" Black Dress Zipper

Cross Grip outsole.  
Net lining.

Whole sizes 5-15

**SUPERSIZE**  
Rubber Overshoes  
are roomy enough  
to slip easily over  
the bulky new  
leather footwear.



T469



T419



### T469 SERVUS

#### 5" Black SUPERSIZE 2-Buckle Overshoe

Oversized styling to fit over bulky leather footwear. Rugged ribbed outsole. Net lining.

Whole sizes 8-16

### T369 SERVUS

#### 15" Black SUPERSIZE 5-Buckle Overshoe

Oversized styling to fit over bulky leather footwear. Rugged ribbed outsole. Net lining.

Whole sizes 8-16

### T419 SERVUS

#### 12" Black SUPERSIZE 4-Buckle Overshoe

Same as T369 but 4-buckle.

Whole sizes 8-16

### T315 SERVUS

#### 13" Black SUPERSIZE Fleece Lined Zipper Overshoe

Oversized styling to fit over bulky leather footwear. Rugged ribbed outsole. Full fleece lining. Full gusseted zipper closure

Whole sizes 8-14





## Rubber Overshoes

- Premium lightweight rubber formulated for stretching over bulky work footwear.
- Special rubber compound prevents ozone deterioration.
- Flexible hand-layered construction.
- Tough, comfortable fabric linings for easy on and off.
- Made in U.S.A. — 100% waterproof.

**Durable net linings** throughout these SERVUS boots allow leather footwear to slip easily in and out.



**SERVUS Enameled Buckles** will stand up to years of wet, corrosive conditions.



31860



31960



41862



41463



### 31860

#### 14" Black 5-Buckle

Full Zig Zag Bar Cleat outsole.  
Nylon lining.  
Made in U.S.A.

**Whole sizes 7-15**

### 31960

#### 11" Black 4-Buckle

Full Zig Zag Bar Cleat outsole.  
Net lining.  
Made in U.S.A.

**Whole sizes 7-15**

### 41463

#### Black E-Z Fit Work Rubber

Full Zig Zag Bar Cleat outsole.  
Made in U.S.A.

**Whole sizes 6-14**

### 41862

#### Black HiChore 2-Buckle

Full Zig Zag Bar Cleat outsole.  
Made in U.S.A.

**Whole sizes 6-15**





## Molded Overshoes

Here are the reliable molded overshoes America counts on for outstanding performance and value. All are injection molded to be uniform in fit and comfort. Choose the styling that will best serve your needs.

- **Molded construction is 100% waterproof.**
- **Compounded for elasticity to stretch over all styles of footwear.**
- **Reinforced design at critical stress points.**
- **Made in U.S.A.**



76919



B7926



B7914



76919

### SERVUS LITE&TUF™ 10" Black EASY KLEEN Stretch Overshoe

Molded construction.  
Snap closure.  
No tread, easy-clean outsole.  
Individually boxed.  
Made in U.S.A.

**Sizes M, L, XL**



### B7926 Bagged

#### SERVUS LITE&TUF™ 10" Yellow Stretch Overshoe

Molded construction.  
Snap closure.  
Diamond Skid Resistant outsole.  
Made in U.S.A.

**Whole sizes 7-16**

### B7924 Bagged (not shown)

(As B7926 except black.)

**Whole sizes 7-16**

### 70924 Boxed (not shown)

(As B7926 except black and boxed.)

**Whole sizes 7-16**



### B7914 Bagged 70914 Boxed

#### SERVUS LITE&TUF™ 16" Black Stretch Overshoe

Seamless molded construction.  
Snap closure.  
Diamond Skid Resistant outsole.  
Made in U.S.A.

**Whole sizes 7-16**

### B7916 Bagged (not shown)

(As B7914 except yellow.)

**Whole sizes 7-16**

**LITE&TUF™  
overshoes are light,  
tough, and pliable.  
And economical  
to boot!**



B7993



### B7993 Bagged 76993 Boxed

#### SERVUS LITE&TUF™ Black Hi-Cut STRETCH-LITE™ Overshoes

Heavy molded construction.  
Skid Resistant outsole.  
Individually boxed.  
Made in U.S.A.

**Sizes S, M, L, XL, XXL**



### B7994 Bagged

(As B7993 except yellow.)

**Sizes S, M, L, XL, XXL**



### B7995 Bagged

(As B7993 except amber.)

**Sizes S, M, L, XL, XXL**

## SIZING CONVERSIONS

**SMALL** fits Men's Sizes **6 – 7 1/2**

**MEDIUM** fits Men's Sizes **8 – 9 1/2**

**LARGE** fits Men's Sizes **10 – 11 1/2**

**X-LARGE** fits Men's Sizes **12 – 13**

**XX-LARGE** fits Men's Sizes **14 – 15**



**SERVUS**  
MADE IN USA

## Injection-Molded Footwear

NSP multi-compound, injection-molded shoes and knee boots set the pace for all others. All are designed to provide the ultimate in fit and comfort. All measure up to the same standards of consistent quality that always go under the SERVUS and NORTHERNER labels.

See the TDT and SUPREME chemical-resistant molded boots on pages 6-10.

- **Safety styles meet ANSI Z41 PT 99 Section 1 for Impact/75 & Compression/75 toe protection.**
- **2-stage injection molded construction.**
- **Removable and washable FOOT FORM cushion insoles.**
- **Anti-skid soles.**
- **Reinforced construction at critical stress points.**
- **Made in U.S.A. — 100% waterproof.**

**Pile-Lined  
Comfort in an  
Injection-  
Molded Boot!**



74938



**74938**

**12" Brown Pile-Lined  
Knee Boot**

Full pile-lined insulation.  
Anti-Skid sole and heel.  
Made in U.S.A.

**Whole sizes 4-15**



**74928**

**12" White Knee Boot**



Beige Anti-Skid sole and heel.  
FOOT FORM contour insole.  
Made in U.S.A.

**Whole sizes 4-15**



74928



**73505**

**15" Black Safety Knee Boot**



SAFE-TOE steel toe construction.  
Deep Angle Cleat sole and heel.  
FOOT FORM contour insole.  
Steel shank.  
Made in U.S.A.

**Whole sizes 6-13**



18821



**18821**

**16" Black Economy  
Knee Boot**



SAFE-TOE steel toe construction.  
Anti-Skid sole and heel.  
FOOT FORM contour insole.  
Made in U.S.A.

**Whole sizes 6-14**

**18822 (not shown)**

(As 18821 except no steel toe.)

**Whole sizes 4-15**



73104

**73104**

**6" Black IRON DUKE®  
Polyblend 5-Eyelet Safety Shoe**



SAFE-TOE steel toe construction.  
FOOT FORM contour insole.  
Gray Anti-Skid sole and heel.  
Made in U.S.A.

**Whole sizes 6-13**



18801

**18801**

**15" Black IRON DUKE®  
Polyblend Safety Knee Boot**



SAFE-TOE steel toe construction.  
Deep Angle Cleat sole and heel.  
Steel shank.  
Made in U.S.A.

**Whole sizes 5-13**

**18802 (not shown)**

(As 18801 without a steel toe.)

**Whole sizes 5-13**

**SERVUS**<sup>®</sup>  
 MADE IN USA

**NORTH**<sup>®</sup>

## Special Operations Footwear

NSP special operations footwear is designed for use in military and specialty performance commercial applications. A supplier of footwear during Operation Desert Storm, NSP is proud to support the U.S. Armed Forces.



11426

### 75177 & 11426

are available on a special make-up basis only. Minimum quantities must be achieved.



75177



11426

### 10" Servus Military Diver Boot



Vulcanized hand-laid construction. Steel toe meets ANSI Z41 PT 99 and is corrosion resistant. Corrosion resistant and puncture resistant stainless steel midsole compliant with ANSI Z41 PT 99 standard. Lead weight riveted to midsole for added weight. Calendered rubber outsole provides traction. Rubber upper is resistant to ozone cracking, and oxidation. Meets U. S. Military Spec Mil-B-87031B(SH) 6 February 1987. Made in U.S.A.

Sizes 1-4 (see chart below)



43995



43995C

### 12" Servus Combat Overshoe

Slush Molded construction. Compounded for resistance to chemical and biological agents. Tabbed grips and elastic loops make for easy closing. Buttons are molded as part of the boot, eliminating the chance for leakage. Meets U. S. Military Spec MIL-O-43995C. Made in U.S.A.

Sizes 3-18



75177

### 15" Caution Green/Yellow/Black NORTH HZT Safety Boot



SAFE-TOE steel toe construction. Puncture-resistant steel midsole. TDT self-cleaning outsole. FOOT FORM contour insole. Meets U.S. Military Spec MIL-B-51176F Toxicological Boot. OSHA Level A. Made in U.S.A.

Whole sizes 7-15

### SIZING CONVERSIONS

1 fits Men's Size 8

2 fits Men's Size 10

3 fits Men's Size 12

4 fits Men's Size 14



## NSP Accessories — Assured quality, fit, and replacement

These accessories include carefully selected products that can enhance the job performance and comfort of our industrial protective footwear.



### 29000

#### Puncture Resistant Midsole

Cushion-covered, flexible steel inserts provide puncture protection underfoot. Stainless steel will not deteriorate or lose effectiveness. Use as an insole or midsole. Can be inserted by size into most over-the-foot boots.

**Whole sizes only 5-14**



### A417

#### THERMOLITE® Insulating Liners

Extra thick, extra warm 3/4" foam insulating liners replace worn liners in most fabric- or leather-top pacs. THERMOLITE® liners are removable and washable.

**Fits leather tops A421, A422, A423, A455, A465, A466.**

**Whole sizes 7-14**



### 28000

#### Deep Pile Boot Liner

Fits most non-insulated knee boots. Deep pile lining for added comfort and warmth in colder weather.

**Sizes S (6-7), M (8-9), L (10-11), XL (12-13), XXL (14-15)**



### 28500

#### Bama Sokket

Removable, insulating boot liners combine acrylic fiber with cotton tricot to wick away perspiration and insulate against the cold. Wear one size larger boot when wearing Bama Sockets.

**Whole sizes 5-15**



### 28114

#### 3/8" Felt Insole

Perfect footbed for waterproof boots. Provides thick cushioning that allows air and moisture to ventilate freely. Insulates foot from cold ground. Takes the shape of each foot with wear for custom support. Comes in wide widths that can be trimmed for narrow boots. Removable and washable.

**Whole sizes 3-15**



### 27000

#### POLIYOU® Air Insole

Featherlight, air-channel insoles can be used alone or to replace old removable insoles. Foam is contour molded to provide gentle support all along the foot. Free-breathing, moisture-absorbing sock lining keeps feet drier, healthier, and more comfortable.

**Whole sizes 6-14**



### 27001

#### FOOT FORM™ Contour Comfort Insoles

Here's the extra layer of stabilizing support and comfort every foot needs. These lightweight insoles are contour formed to the foot with lift at the arch and support at the heel. Removable, washable, and replaceable.

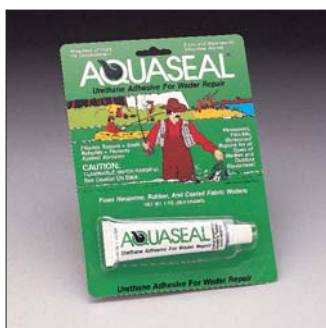
**Whole sizes 3-15**



### 25001

#### Rubber Patch Kit

Handy patch kit with abrasion and burnishing tool, adhesive, and rubber patches to repair unexpected cuts, snags or punctures. No heat necessary. Sets and seals quickly. Travels easily in pocket or tool box for fast, on-the-job repairs.



### 25002

#### AQUASEAL® Boot Repair

End annoying seepage and leaks with AQUASEAL® urethane adhesive. Repairs neoprene, rubber, and coated fabric boots and waders — permanently seals and repairs leaks with a flexible, abrasion-resistant and **WATERPROOF** bond. Hanging blister pac.

This **Chemical Resistance Comparison** chart is provided as a guide for qualified professionals who recommend, select, specify or otherwise determine the suitability of products for worker safety. As such, the Chemical Resistance Comparison chart is advisory only. The suitability of a product for a specific application must be determined and tested by the purchaser.

**NSP L.L.C. assumes no responsibility for the suitability of an end user's product selection for a specific application.**

**E** — EXCELLENT  
**G** — GOOD  
**F** — FAIR  
**P** — POOR

	RUBBER	NEOPRENE	PVC		RUBBER	NEOPRENE	PVC		RUBBER	NEOPRENE	PVC
Acetaldehyde	F	E	G	Dibenzyl Ether	F	G	G	Methyl Cellosolve	F	E	G
Acetic Acid	E	E	G	Dibutyl Phthalate	G	F	G	Methyl Chloride	P	P	F
Acetone	F	G	P	Dictylphthalate	P	G	F	Methyl Ethyl Ketone	F	G	P
Acrylonitrile	F	G	G	Diesel Fuel	P	G	G	Milk	E	E	E
Ammonia Anhydrous	E	E	G	Diethanolamine	F	G	G	Mineral Oil	P	E	G
Ammonium Hydroxide	G	E	G	Diisobutylene	F	E	P	Monoethanolamine	F	G	G
Ammonium Sulfate	E	E	G	Ethyl Acetate	F	F	F	Morpholine	P	E	G
Amyl Acetate	F	F	G	Ethyl Alcohol	G	E	E	Naphta	P	E	F
Amyl Alcohol (Fusel Oil)	G	E	E	Ethylene Glycol	G	E	G	Nitric Acid	F	G	G
Animal Fats	P	G	G	Ethyl Ether	G	E	P	Nitrobenzene	P	F	P
Aniline	F	E	G	Ethyl Formate	G	G	F	Octyl Alcohol	E	E	E
Battery Acid	P	F	G	Ferric Chloride	G	E	G	Oleic Acid	G	E	E
Benzaldehyde	F	G	F	Formaldehyde	G	E	G	Olive Oil	F	E	G
Benzene (Benzol)	P	F	P	Formic Acid	E	E	E	Paint Remover	F	G	F
Benzol (Benzene)	P	F	P	Furfural	F	G	G	Perchloroethylene	P	F	P
Benzyl Alcohol	P	G	E	Fusel Oil (Amyl Alcohol)	G	E	E	Perchloric Acid	F	G	G
Benzyl Chloride	P	F	F	Gasoline (Cracked)	P	E	F	Petroleum Oils	P	E	G
Butane	F	G	F	Gasoline (SR)	P	E	F	Petroleum Solvent	P	G	F
Butter	F	E	G	Glycerine	E	E	G	Phosphoric Acid 20%	F	E	G
Buttermilk	F	E	E	Grease (All Kinds)	P	G	G	Pine Oil	P	E	G
Butyraldehyde	F	G	F	Hexane	F	G	F	Potassium Dichromate	F	G	G
Butyl Acetate	F	F	G	Hydraulic Fluids (Petroleum Base)	P	G	F	Potassium Hydroxide	G	E	G
Butyl Alcohol	E	E	G	Hydraulic Fluids (Phosphate Ester)	G	F	P	Potassium Permanganate	F	E	F
Calcium Chloride	E	E	G	Hydraulic Fluids (Silicate Ester)	G	G	G	Propane	F	G	G
Calcium Hypochlorite	G	E	G	Hydraulic Fluids (Water Glycol)	G	G	G	Propyl Acetate	F	G	F
Carbolic Acid	E	F	E	Hydrobromic Acid	G	E	G	Propyl Alcohol	G	E	E
Carbon Disulfide	F	F	G	Hydrochloric Acid	F	G	G	Silicone Oil 220	F	E	G
Carbon Tetrachloride	P	G	F	Hydrofluoric Acid	P	P	G	Skydrol #500	P	F	P
Carbonic Acid	F	E	G	Hydrofluoric Acid (Hot)	P	P	G	Soaps	F	E	G
Castor Oil	E	E	G	Hydrogen Peroxide	G	G	E	Sodium Chloride	G	E	G
Caustic Potash	G	E	G	Hydrogen Sulfide	F	G	G	Sodium Hydroxide	G	E	G
Caustic Soda	G	E	G	Hylene	P	G	F	Stearic Acid	E	E	E
Chlorine Water	G	E	G	Isopropyl Alcohol	G	E	G	Sulfuric Acid	F	G	G
Chloroacetone	F	G	P	Kerosene (Coal Tar)	P	F	F	Tannic Acid	E	E	E
Chloroform	F	F	F	Kerosene (Pet.)	P	G	F	Tide	G	E	G
Chlorothene	F	G	F	Lactic Acid	E	E	E	Tin Chloride	G	E	G
Chlorox	G	E	E	Lard Oil	F	E	G	Toluene	P	F	P
Citric Acid	E	E	E	Linseed Oil	F	E	G	Toluol	P	G	P
Coal Tar Solvents	P	P	F	Linseed Oil	F	E	G	Trichlorethylene	F	G	F
Coconut Oil	P	E	G	Malic Acid	G	E	E	Tricresol Phosphate	G	G	G
Copper Chloride	F	G	G	Methyl Acetate	F	G	F	Trlethanolamine	F	G	G
Copper Sulfate	F	G	G	Methyl Alcohol	G	E	E	Trinitrotoluene	P	F	G
Cottonseed Oil	P	E	G					Trinitrotolual (TNT)	G	E	G
Cutting Oil	P	G	F					Tung Oil	F	E	G
Cyclohexane	P	G	P					Turpentine	P	E	G
Cyclohexanone	P	F	P					Water	E	E	E
Diacetone Alcohol	F	G	G					Xylol	P	G	P

With NSP Triple Density Technology, it is possible to mold three compounds in one boot. Normally, two compounds are used to make the parts of the outsole both durable and slip-resistant in specific organic or inorganic substances. The third compound is used to mold job-specific boot uppers for use in harsh environments such as slaughterhouses, agri-industrial fertilizers and chemicals, petrochemicals, dairy and poultry processing, commercial fishing and processing, breweries, and other specific applications. Note the recommended job-applications for Triple Density Footwear throughout this catalog. In these applications, the footwear ratings will be even better than the ratings for ordinary PVC as shown in this Chemical Resistance Chart.

Stock No.	Page No.	Sizes	Case Pairs	Case Weight	Packaging	Stock No.	Page No.	Sizes	Case Pairs	Case Weight	Packaging
A111	25	3-15	6	35	BAG	11426	32	1-4**	4	44	BAG
A351	28	6-15	6	32	BAG	11444	26	6-14	6	55	BOX
A380	28	8-16	6	33	BAG	11490	20	6-14	6	40	BAG
A382	25	5-14	6	31	BAG	18801	31	5-13	6	30	BULK
A383	25	3-15	6	29	BAG	18802	31	5-13	6	26	BULK
A417	20, 33	5-14	12	6	BAG	18821	31	6-14	6	29	BAG
A421	18	6-15	6	38	BAG	18822	31	4-15	6	27	BAG
A422	18	7-14	6	42	BAG	21607	24	6-13	6	29	BAG
A423	19	5-11 WOMEN	6	26	BAG	21622	21	6-13	6	45	BAG
A455	19	7-14	6	30	BAG	22103	4	6-13	12	47	BAG
A465	19	7-14	6	25	BOX	22114	5	3-15	6	27	BAG
A466	19	7-14	6	25	BOX	22115	5	4-14	6	23	BAG
B7914	30	7-16	12	34	BAG	22148	4	6-13	6	28	BAG
B7916	30	7-16	12	34	BAG	22206	3	5-15	6	37	BAG
B7924	30	7-16	12	24	BAG	22214	5	3-15	6	31	BAG
B7926	30	7-16	12	24	BAG	22215	5	3-15	6	27	BAG
B7993	30	S-XXL	24	24	BAG	22248	3	6-13	6	32	BAG
B7994	30	S-XXL	24	24	BAG	22273G	5	3-15	6	36	BOX
B7995	30	S-XXL	24	24	BAG	22274G	5	5-14	6	32	BOX
SR101	23	S/M-XXL	24	12	BAG	24503	20	5-14	6	38	BOX
SR105	22	S-XXXL	12	25	BAG	25001	33	—	Individual		BAG
SR108	22	S-XXXL	12	57	BAG	25002	33	—	Individual		BAG
SR110	22	S-XL	12	37	BAG	27000	33	6-14	Individual		BAG
SR111	22	S-XL	12	21	BAG	27001	33	3-15	Individual		BAG
SR201	23	—	Individual		BAG	28000	33	S-XXL	24	24	BAG
T111	25	3-15	6	30	BAG	28114	33	3-15	12	2	BAG
T112	26	7-15	6	45	BAG	28500	33	5-15	24	18	BAG
T314	28	5-15	12	35	BAG	29000	33	5-14	50	29	BULK
T315	28	8-14	6	35	BAG	31860	29	7-15	12	44	BULK
T369	28	8-16	6	33	BAG	31960	29	7-15	12	40	BULK
T419	28	8-16	6	32	BAG	41463	29	6-14	12	29	BULK
T469	28	8-16	12	45	BAG	41862	29	6-15	12	35	BULK
R1141	14	5-6, 7-12*, 13-14	12	50	BAG	43995	32	3-18	6	32	BAG
1142	14	5-12*, 13-15	12	47	BAG	70914	31	7-16	12	42	BOX
1152	14	5-12*, 13	12	53	BAG	70924	31	7-16	12	32	BOX
2141	15	5-14	6	35	BAG	72202	10	6-13	6	29	BAG
2142	15	6-15	6	46	BAG	72203	10	6-13	6	28	BAG
2143	15	6-14	6	51	BAG	72204	10	6-13	6	30	BAG
2144	15	5-15	6	35	BAG	73104	31	6-13	6	25	BAG
R2145	12	6-14	6	46	BAG	73505	31	6-13	6	30	BAG
2149	13	5-13	6	35	BAG	74928	31	4-15	6	26	BAG
2155	12	6-13	6	37	BAG	74938	31	4-15	6	28	BAG
2159	13	6-15	6	40	BAG	75101	8	5-15	6	31	BAG
2165	13	6-13	6	37	BAG	75102	8	5-15	6	29	BAG
2169	13	5-14	6	38	BAG	75103	8	5-11 WOMEN	6	29	BAG
R6130	17	6-13	6	27	BAG	75104	8	5-11 WOMEN	6	27	BAG
6131	17	6-13	12	50	BAG	75105	7	5-15	6	31	BAG
6141	17	5-13	12	50	BAG	75106	7	5-15	6	29	BAG
6145	16	6-14	6	35	BAG	75108	9	5-15	6	29	BAG
6147	16	6-13	6	28	BAG	75109	9	5-15	6	31	BAG
7361	12	7-15	12	37	BAG	75110	9	5-11 WOMEN	6	27	BAG
7362	12	7-15	12	47	BAG	75111	9	5-11 WOMEN	6	29	BAG
11001	27	S-XL	6	36	BAG	75177	6, 32	7-15	6	31	BAG
11003	27	S-XL	12	20	BAG	76919	30	M-XL	12	31	BOX
11134	24	6-14	6	29	BULK	76993	30	S-XXL	24	31	BOX
11135	24	5-14	6	42	BULK	78590	21	7-14	6	46	BAG
11146	26	5-14	6	52	BAG						
11190	20	5-14	6	35	BAG						

\* Available in half sizes.

\*\* See sizing conversion chart.

All NSP Protective Footwear is designed for proportional fit and comfort.  
Only median heights and weights are provided in this catalog for your convenience.  
**Heights and weights will necessarily vary slightly by size.**

AQUASEAL® Registered trademark of McNett Corporation  
NORTH® Registered trademark of North Safety Products Inc.  
POLIYOU® Registered trademark of Kun Huang Enterprise Co.  
THERMOLITE® Registered trademark of Dupont Corporation  
UL® Registered trademark of Underwriter's Laboratories Inc.



# *To order NSP job-designed footwear call:*

**Toll Free:**

## **800-777-9021**

**Fax:**

## **800-267-6809**



**Norcross Safety Products**

ISO 9001 Registered  
1136 Second Street  
Rock Island, IL 61201  
Telephone 309-786-7741  
Facsimile 309-786-6923

*Equal Opportunity Employer M/F*

## **NORTH**

**North Safety Products**

### **USA**

#### **Cranston**

**1-800-430-4110**

2000 Plainfield Pike  
Cranston, RI 02921  
Tel: (401) 943-4400  
Fax: (401) 275-2618  
Toll free fax: 1-800-572-6346

### **EUROPE**

#### **The Netherlands**

Noordmonsterweg 1  
4332 SC Middelburg  
The Netherlands  
Tel: +31 (0) 118 656400  
Fax: +31 (0) 118 627535

### **CANADA**

#### **Montreal**

**1-888-212-SAFE (7233)**

10550 Parkway Blvd.  
Anjou, Quebec  
H1J 2K4  
Tel: (514) 351-SAFE (7233)  
Fax: (514) 355-SAFE (7233)

#### **Toronto**

**1-888-316-SAFE (7233)**

165 Admiral Blvd.  
Mississauga, Ontario  
L5T 2T3  
Tel: (905) 670-SAFE (7233)  
Fax: (905) 670-7558

#### **Edmonton**

**1-888-661-3638**

9343 45th Avenue  
Edmonton, Alberta  
T6E 5Z7  
Tel: (780) 437-2641  
Fax: (780) 436-0048

Ask your sales representative about North Safety Products' full line of personal protective equipment including respiratory protection, eye/head/face protection, hearing protection, hand protection, fall protection and first aid products.

**[www.northsafety.com](http://www.northsafety.com)**

# ***Proven Performance.***