

## HP60 - FLOOR DRYING PACKAGE



**ORDER #**  
**HP60FDP**

### SPECS

DATA	U.S./CAN DETAILED INFO
<b>Model No.</b>	HP60
<b>Weight of HP60</b>	60 lbs.
<b>Total System Airflow</b>	103 CFM (cubic feet per minute)
<b>Static Pressure (Maximum)</b>	60" (water lift) and still has 55 CFM
<b>Housing Material</b>	MDPE - med. density polyethylene
<b>Motor Type</b>	Industrial Regenerative Blower
<b>Power Draw - 115V</b>	15A circuit needed : 5.6 - 6.5A (no restrictions) 11 - 12A (avg. application.)
<b>Drying Modes</b>	Either Negatively or Positively

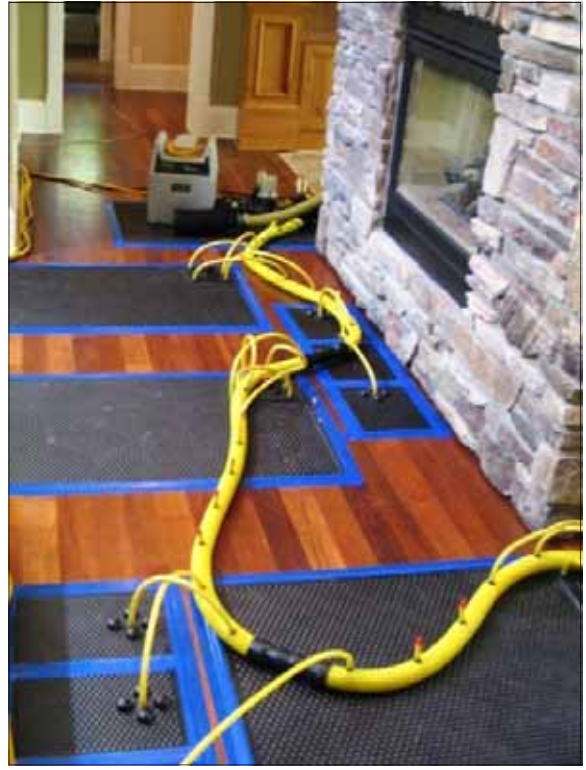
Designed for drying floors or ceilings using the HP system in negative mode with our Vac-It Panels (patent pending). The set-up is extremely quick, easy and efficient for your typical floor drying needs. To add versatility purchase Active Hoses, Manifolds or WCB accessories. Dry approximately 200 sq ft as packaged.

COMES WITH:	QTY	PART #
HP60 Unit	1	
Main AIR IN - Quick Connects installed at factory	1	PTFC
Main AIR OUT - Quick Connects installed at factory	1	PTMA
AIR OUT Main Hose - 6' w/ factory-set PRV	1	AOMH
AIR IN Main Hose - 6' Inline Filter, factory-set PRV & Main QCW (OCTT02)	1	AIMH
Carry Bag 51"x32"	1	CB3
Rolling Duffle Bag 38"x16"x16"	1	CB2
Safety Yellow Blank Hose 1½" x50'	2	PLO3
Quick Connect - Panel T's (Hosecuffs attached)	4	VAC-T
Quick Connect - 1½" Hosecuff	14	HC3
Quick Connect Inline Manifold 10 -3/8" ports	6	IM01
End Cap Plugs	8	QCEPO1
Variety Panel Package: (3) Large Multi Port Panels, (1) 8 Point, (1) Slim Panel—Large Port Clear, (5) Slim Panel—Small Port & (1) U Panel Kit which includes (1) U Panel & (3) Small Panels w/ 3/8" Port	1	VP
Safety Yellow Tubing (3/8" x 200')	1	RHO5A
Soft Tubing Stoppers (bag of 50)	1	RP2
Silencer	1	SILENCER
Manual	1	

# FLOOR DRYING EXAMPLES



Multiport Panel



8 Point Panels and Multi-Port Panels



Floor drying set-up shows HP system using a variety of panels