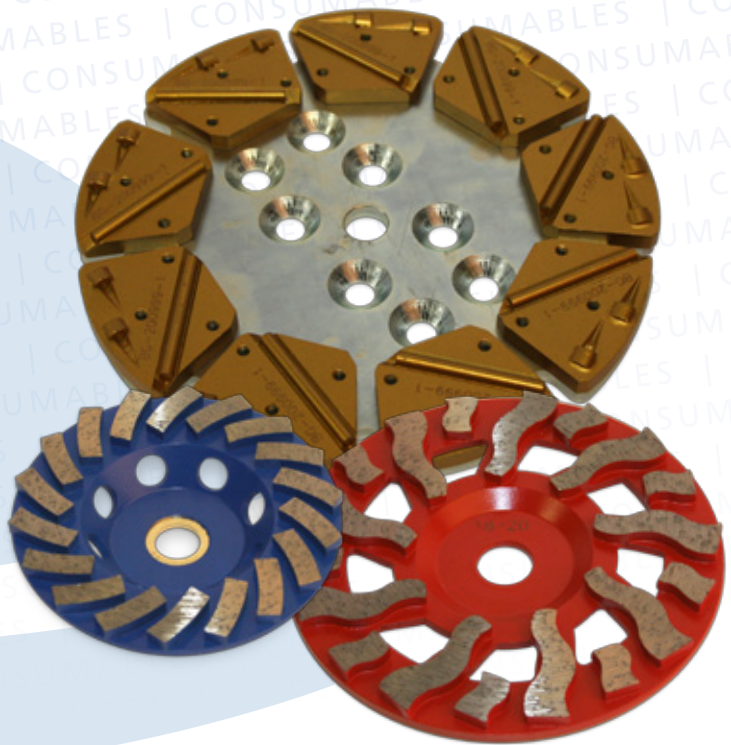


Consumables



The Trusted Choice of Professionals for Over 30 Years

 **BLASTRAC**®

1.800.256.3440 • BLASTRAC.com

Consumables

DIAMOND CUP WHEELS & PCD WINGS

4.5" Cup Wheels

CG-445DT CC

- 10 Segment Diamond Turbo Cup Wheel



CG-455DT CC

- 18 Segment Diamond Turbo Cup Wheel



Recommended Use Table

- CC** (Concrete Cleaning, Coating Removal, Planing)
- EGP** (Economy General Purpose)
- PGP** (Premium General Purpose)
- AGP** (Aggressive Grinding for Polishing)
- PFG** (Premium Fine Grinding)
- EFG** (Economy Fine Grinding)

7" Cup Wheels

CG-712ETB EGP

- 12 Segment Diamond Turbo Cup Wheel



CG-725DT PGP

- 12 Segment Diamond Turbo Cup Wheel



CGF-7BTD AGP

- 18 Segment Supreme Cup Wheel 18/20 Grit



CG-735DT PFG

- 24 Segment Diamond Turbo Cup Wheel



CG-724ETB EFG

- 24 Segment Diamond Turbo Cup Wheel



PCD Wings & Plate

BG200995

- PCD 1/1 for Heavy Romol Wing



BG200997

- PCD Split Wing



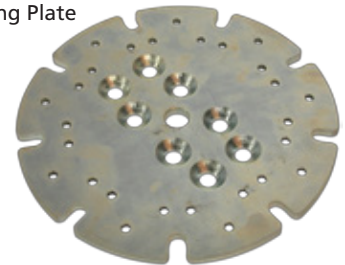
BG200999

- PCD 2 Quarter Round Right Hand Wing



E08830

- Wing Plate



PCD's are great for thick coating removal, very aggressive. For best results remove bulk of coating without continued contact with concrete. Come back with an aggressive metal bond diamond segment and clean up any thin coating left behind. This will help preserve the life of the PCD segments.

The Trusted Choice of Professionals for Over 30 Years



1.800.256.3440 • BLASTRAC.com

Always wear appropriate eye, ear and respiratory protection for the application, as specified by OSHA regulations and your employer. Never operate or maintain equipment before reading and understanding the instructions for operation and maintenance. Obey all safety signs and instructions while operating or maintaining equipment.

Products manufactured and marketed by Blastrac are protected by patents issued or pending in the United States and other countries. Blastrac reserves the right to change the specifications referred to in this literature at any time, without prior notice. Blastrac is a registered trademark owned by Blastrac, NA.

© 2013 Blastrac, NA All rights reserved.

Consumables

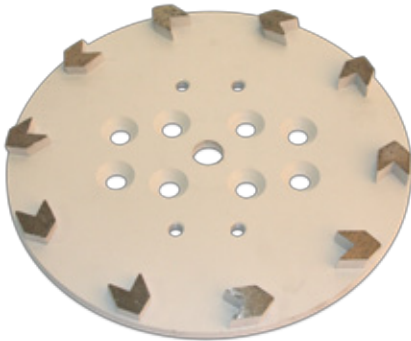
DIAMOND DISKS & COUGR® DISKS

10" Diamond Disks

CG-1010ASEG

- 10 Segment Diamond Turbo Premium Disk

Very aggressive diamond for removal of glues, mastics, mortars and aggressive concrete preparation.



CG-1020ASEG

- 20 Segment Diamond Premium Arrow Disk

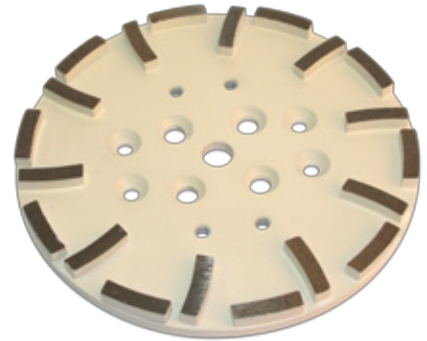
For removal of glues, mastics, mortars and aggressive concrete preparation.



CG-1020GTP

- 20 Segment Diamond Turbo Premium Disk

For general purpose grinding.



Cougr® Disks

05-10749C

- 4½" - #10 Grit Abrasive Disk



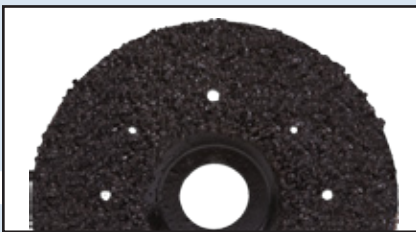
05-10750C

- 4½" - #16 Grit Abrasive Disk



05-10705C

- 7" - #10 Grit Abrasive Disk



05-10700C

- 7" - #16 Grit Abrasive Disk



Cougr heavy-duty abrasive disks are ideal for removing soft coatings, mastics, urethanes, epoxies or paint.

Always wear appropriate eye, ear and respiratory protection for the application, as specified by OSHA regulations and your employer. Never operate or maintain equipment before reading and understanding the instructions for operation and maintenance. Obey all safety signs and instructions while operating or maintaining equipment.

Products manufactured and marketed by Blastrac are protected by patents issued or pending in the United States and other countries. Blastrac reserves the right to change the specifications referred to in this literature at any time, without prior notice. Blastrac is a registered trademark owned by Blastrac, NA.

The Trusted Choice of Professionals for Over 30 Years



1.800.256.3440 • BLASTRAC.com

© 2013 Blastrac, NA All rights reserved.