

SYCLONE[®]

FLOWMASTER AIR MOVER

Syclone | FlowMaster Airmover

The Syclone FlowMaster air mover is designed for the professional restorer. Its compact, low profile design takes up less space than traditional centrifugal and axial air movers. Loaded with features, the FlowMaster is a top performer. Variable speed control allows users to dial in the exact airflow. Low amp draw and dual GFCI outlet allow multiple units to be daisy chained on a single circuit. Lighted power cord lets you know the outlet has power. Choose from five different drying positions to reach all surfaces. Built in kick stand allows unit to direct airflow at a 15 degree up angle. Stackable up to 4 units high. Molded in handles make it easy to move the unit to and from the job site. Access to the impeller and motor is easy due to the two-piece housing design, which makes cleaning simple and fast. Optional HEPA filter attachment easily snaps on to the Syclone FlowMaster air mover to turn it into an air scrubber.



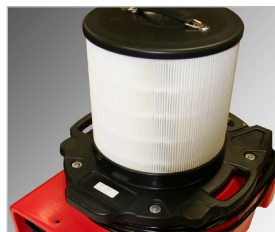
- ▶ **Low profile design**
- ▶ **Variable speed control**
- ▶ **Built-in kick stand- Multiple drying positions**
- ▶ **Optional HEPA filter attachment**
- ▶ **Lighted power cord end**
- ▶ **Stackable**



Variable Speed Control



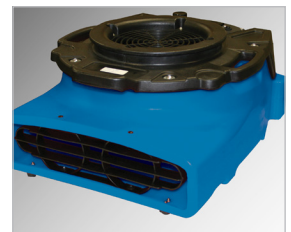
Built-in Kick Stand



Optional HEPA Filter Attachment



Stackable



Available in Blue

SPECIFICATIONS

Item	Description
1682-5325	Syclone Flowmaster RED variable speed air mover (ea)
1683-5326	Syclone Flowmaster BLUE variable speed air mover (ea)
1683-5720	Syclone Flowmaster HEPA filter (ea)

Dimensions	20.5" L x 17.5" W x 9.75" H
Weight	27.6 lbs
Housing	Rotational molded polyethylene
Amps	1.9 amps
Controls	Variable speed with On/Off switch
Air Flow CFM 2	325 cfm

Power cord	Lighted 20'
Fan	Aluminum impeller
Power outlet	Dual GFCI
Motor rating	195 watts (1/4 HP)
Accessories	Optional HEPA filter attachment
Certification	ETL tested to UL/CSA standards

Locations Nationwide
 Visit www.interlinksupply.com to find a branch nearest you.