



## TECHNICAL DATA SHEET

### ONE COMPONENT Expanding Polyurethane Foam Sealant

**TYTAN ONE-COMPONENT PRO** is a professional, gun applied polyurethane expanding foam formulated for filling, insulating, and sealing gaps, cracks, and openings in both the interior and exterior of buildings. The multi - purpose formula creates a durable, airtight, and waterproof seal that stops air infiltration, provides high insulation value, and saves both time and energy. It has excellent adhesion to most building surfaces including wood, glass, metal, masonry, and plastic. It is environmentally friendly with no CFC's or HCFC's and it is UL listed.

#### FEATURES

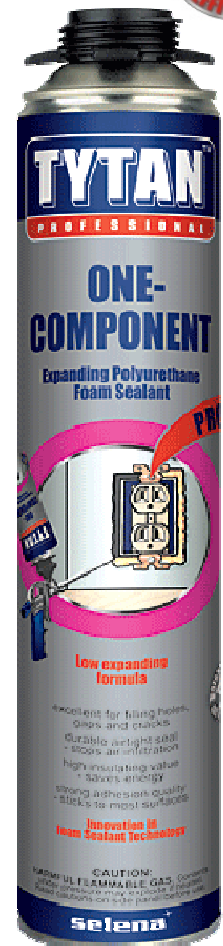
- ⇒ Professional Gun Applied Formula that Insulates, Fills, Seals, and Bonds
- ⇒ Excellent Sealing and Insulation Properties
- ⇒ Durable Airtight Seal - Stops Air Infiltration, Drafts, and Energy Loss
- ⇒ High Insulating Value - Saves Energy and Money
- ⇒ Bonds to and Seals Most Popular Construction Materials, including: Wood, Concrete, Plaster, Plumbing, and more
- ⇒ Excellent for both Interior and Exterior Applications
- ⇒ Shelf life 18 months

#### TYPICAL APPLICATIONS

- Wide Range of Interior and Exterior Sealing and Insulating Applications such as Basements, Roof Areas, Plumbing, Electrical, Heating and Cooling Penetrations:
- Excellent to Fill and Seal all Interior and Exterior Building Gaps, Cracks, and Openings
- Excellent to Fill and Seal in Exposed Corner T-joints and Studs
- Excellent to Fill and Seal Around Dryer and Exhaust Vents, Water Faucets, Plumbing Fixtures, Electric, HVAC and Gas Penetrations
- Excellent to Seal and Insulate Under the Edges of Exposed Siding and along Foundations

#### TECHNICAL DATA

Base	polyurethane
Type	foam sealant
Appearance	foam
Color	pale yellow
Odor	odorless when cured
Application temperature	32°F to 86°F / 0°C - 30°C
Can temperature	min. 50°F / 10°C
Tack-free	≤10 min.
Cutting time 1"	≤40 min., max 24 hrs.
Cure	in 6 hrs; complete cure after max 48 hrs
Service temperature after curing	-76°F to 212°F / -60°C to 100°C
Density	1.12-1.37 lbs./cu. ft.
Shrinkage	≤ 5% after first 24 hrs
Water absorption	≤ 2% after first 24 hrs then waterproof
Compression strength	7 PSI
Tensile strength	20 PSI
% Closed cell content	up to 60%
Thermal Conductivity	0.036 W/mK
R Value [Typically]	4 – 5 inch





# TECHNICAL DATA SHEET

Product size		Yields				
[oz]	[g]	[liter]	cu ft	1/2"	3/8"	1/4"
29	820	47-52	1,66 – 1,84	1,218 [ft]/ 371 [m]	2,165 [ft]/ 659 [m]	4,872 [ft] / 1,480 [m]
24	680	35-40	1,24 – 1,41	907 [ft]/ 276 [m]	1,612 [ft]/ 491 [m]	3,628 [ft] / 1,100 [m]

All communicated parameters were measured in compliance with Selena’s internal standards and depend heavily on external curing conditions, equipment quality, and adherence to application instructions. The parameters were measured in standard laboratory conditions at +73 °F (+23 °C) and 50% RH. Yield results are based on theoretical calculations for comparative analysis purposes. Results may vary depending on ambient conditions and particular application.

### UL Classified

Caulking and Sealants Applied to Inorganic Reinforced Cement Board+  
<75NN>

#### SURFACE BURNING CHARACTERISTICS

Flame Spread: 15

Smoke Developed: 20

+ - tested as applied in three 3/4 in. diameter beads 5 in. OC covering 12.5 percent of the exposed test sample area.

### NFPA 30B Classification: Level 3 Aerosol

### APPLICATION INSTRUCTION

**Always read all operating, application, and safety instructions before using any products from Selena Group.** Use in conformance with all local, state, and federal regulations and safety requirements. Read all product directions and safety information before use.

#### Preparation

1. Product **FLAMMABLE DURING DISPENSING.**

2. Wear protective clothes, gloves, and eye protection. Use only in well ventilated area or wear approved respiratory equipment. Contact and application areas should be dry, clean, free of dust, oil, grease or any foreign objects, debris and contaminants that could interfere with proper adhesion. Clean and degrease surface with TYTAN™ Cleaner, acetone, isopropanol, ethanol (metals, glass) or detergent (plastics), and let it dry completely. Surfaces must be sound and in good condition. It is recommended to lightly spray surfaces with water prior to applying foam to enhance expansion and curing properties.

3. For best results and maximum yield, apply at temperatures 50°F to 86°F/ 10°C - 30°C. Use below 32°F /0°C is not recommended.

4. Shake the can vigorously for 30-45 seconds before attaching to recommended TYTAN Foam Gun and also in-between uses.

5. Remove protective cap, invert can, and screw the can firmly onto the recommended TYTAN gun - do not over tighten.

#### Application

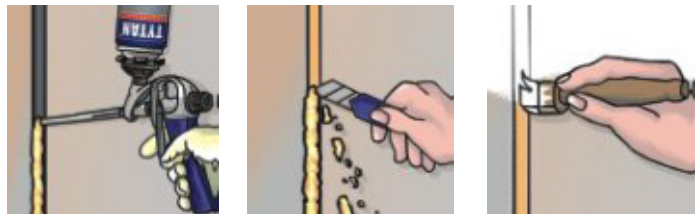
1. Maintain the can in upside-down, inverted position during the application.

2. Point gun in safe direction and slowly pull trigger to test dispense foam. Adjust control knob on gun handle to achieve the desired application flow.

3. Fill cavities to approximately 50% full to allow for foam expansion after application. Cracks wider than 2" should be filled gradually in layers.

4. Trim excess foam with sharp knife or serrated edge. Cured foam may be sanded, painted, or stained (not before 24 hrs. after application). Cured foam discolors and loses its stability and properties when exposed to UV light. Paint or coat exposed foam for best results.

5. If idle for 10 or more minutes between uses, shake can vigorously 30-45 seconds before reusing.





## TECHNICAL DATA SHEET

6. When not in use, gun valve should be cleaned with TYTAN CLEANER.

### Cleaning

1. Clean Foam Gun thoroughly with TYTAN CLEANER immediately after use to prevent foam from hardening in gun.
2. Uncured Foam – Clean immediately with TYTAN CLEANER or acetone.
3. Cured Foam - if hardened on skin - use an industrial cleaner with pumice. Repeat process until foam is removed. Cured foam must be mechanically removed or allowed to wear off in time.

### SHELF LIFE, STORAGE AND LOGISTIC

When stored properly, shelf life is **18 months** from production date, printed on the bottom of each can. Store upright in cool and dry area at temperatures 41°F to 86°F/ 5°C to 30°C. Do not expose to open flame or temperatures above 120°F/ 50°C. Keep away from open flame.

Product code	Size	Packaging	Case Pack
5488	29 Oz.(820g)	Aerosol Can	12
0791	24 Oz.(680g)	Aerosol Can	12

### SAFETY AND WARRANTY

**CAUTION:** Container may burst if heated.

**SAFETY: HARMFUL CONTENTS UNDER PRESSURE. CONTAINS FLAMMABLE GAS.** Shut off all gas pilot lights, electrical igniters, burners and other sources of HEAT before and during use. Do not smoke or use matches, lighters while dispensing foam Contents may burst if left in areas susceptible to extremely high temperatures. Do not place in Hot water. DO NOT PLACE OR STORE IN A CLOSED AREA SUCH AS A CAR. USE ONLY IN WELL VENTILATED AREAS. AVOID CONTACT WITH SKIN OR EYES. WEARING PROTECTIVE EYEWEAR AND GLOVES IS RECOMMENDED. DO NOT BREATHE VAPOR/SPRAY. DO NOT INCINERATE, PUNCTURE, OR EXPOSE CAN TO DIRECT SUNLIGHT FOR LONG PERIODS OR STORE AT TEMPERATURES OVER 120°F/50°C. **KEEP OUT OF REACH OF CHILDREN.**

**FIRST AID:** In case of eye contact, flush **immediately** with water for 15 minutes and **get medical help.** If inhalation causes physical discomfort, move to fresh air. If discomfort persists or any breathing difficulty occurs, **get medical help.** If swallowed, drink large quantities of water. DO NOT induce vomiting. **GET PHYSICIAN ASSISTANCE IN ALL CASES.** Cured foam is not harmful to health.

**INGREDIENTS:** polymeric diisocyanate, polyols, hydrocarbon gas mixture.

**Always read all operating, application, and safety instructions before using any products from Selena USA, Inc.** Use in compliance with all local, state, and federal regulations and safety requirements. Read all product directions and safety information before use.

**DISPOSAL OF PRODUCT AND CONTAINERS:** Each person, firm, or corporation engaged in the application, installation, disposal, or any other use of these materials shall carefully and precisely determine all potential hazards associated with such products in specific usage, and utilize all appropriate precautionary and safety measures as outlined in local, state, and federal regulations governing the use or disposal of product or empty containers.

**LIMITED WARRANTY:** Selena USA, Inc. warrants its products to be free of manufacturing defects due to workmanship and materials for the duration of and in accordance to the conditions stated in the individual Technical Data Sheets. This warranty is limited to the replacement of the product when such product proves to be defective in manufacture. This express warranty will only apply if the product is stored as specified and used in accordance for its intended purposes. It does not apply to failures due to improper application. Selena USA, Inc. disclaims all other warranties, expressed or implied, as well as liability for any incidental or consequential damages. The liability extent of both manufacturer and seller is limited to replacement of product only.

With the publication of this Technical Data Sheet, previous editions are no longer valid. Due to continuous product and process improvements, specifications and prices are subject to change without notice.

The company shall not be liable, in any event for any incidental, consequential, special, or indirect damages or damages to a structure or its contents from any cause whatsoever. This warranty may not be modified or amended by any employee, representative agent or customer of Selena USA, Inc. This warranty is exclusive and is in lieu of all other warranties, express, or implied, including any implied warranty of merchantability or fitness for particular purpose. The extent of liability for breach of such warranty is limited to replacement of product only.