

# CB Anchor Series

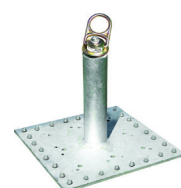
**GUARDIAN**  
FALL PROTECTION  
PERFORMANCE SAFETY GEAR

Standard	Swivel Top	Post	Base	Description
#00645	#00651	12"	16" x 16"	CB-12 for wood, steel, and concrete
#00656	#00652	18"	12" x 12"	CB-18 for concrete
#00690	#00653	24"	12" x 12"	CB-24 for steel and concrete
#00657		18"	16" x 16"	CB-18 for wood and steel
#10645	#10651	12"		CB-12 Weld-On Post
#10656	#10652	18"		CB-18 Weld-On Post
#10681			16" x 16"	Backer Plate for CB-12
#10683			12" x 12"	Backer Plate for CB-18
#00680				CB swivel top system for CB-12 or CB-18
#00600			6" x 6"	CB-1-B
#00610			2½" Diameter	CB-1-W Weld-On Anchor

Standard



Swivel Top



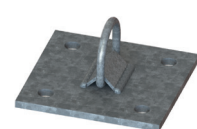
Weld-On Post



CB-1-W



CB-1-B



Compliant with all OSHA 1910, OSHA 1926 Subpart M, ANSI Z359.1-2007, and ANSI A10.32-2012 regulations.

Custom configurations available. Not repairable. Contact customer service for details.

CB Anchors are suitable for the following applications:



**Personal Fall Arrest:** CB Anchors may be used in Personal Fall Arrest applications to support a MAXIMUM 1 PFAS. Structure must withstand loads applied in the directions permitted by the system of at least 5,000 lbs. Maximum allowable free fall is 6', unless used in combination with equipment explicitly certified for extended free fall of up to 12'. Applicable D-ring: Dorsal.



**Restraint:** CB Anchors may be used in Restraint applications. Restraint systems prevent workers from reaching the leading edge of a fall hazard. Structure must withstand loads applied in the directions permitted by the system of at least 1,000 lbs. No vertical free fall is permitted. Restraint systems may only be used on surfaces with slopes up to 4/12 (vertical/horizontal). Applicable D-rings: Dorsal, Chest, Side, Shoulder.



**Work Positioning:** CB Anchors may be used in Work Positioning applications. Work Positioning systems allow a worker to be supported while in suspension and work freely with both hands. Structure must withstand loads applied in the directions permitted by the system of at least 3,000 lbs. Maximum allowable free fall is 2'. Applicable D-rings: Side, Shoulder.



**Confined Space/Rescue:** CB Anchors may be used in Confined Space/Rescue applications. Confined Space/Rescue systems are those capable of recovering a worker from a confined location or after they are exposed to a fall. Structure must withstand loads applied in the directions permitted by the system of at least 3,000 lbs. No vertical free fall is permitted. Applicable D-rings: Dorsal, Chest, Shoulder.

**For all applications: worker weight capacity range (including all clothing, tools, and equipment) is 130-310 lbs., or up to 420 lbs. if used in combination with equipment explicitly certified for such use. MAXIMUM 1 connection per CB Anchor.**

Materials: galvanized steel or powder-coated steel.

MAXIMUM 1 connection per CB Anchor.

Suitable for use in combination with HLL System. HLL systems must be designed, installed, and used under the supervision of a Competent Person.